



Elm Grove, SW19

£2,500 Per calendar month

A top floor, two bedroom apartment with a modern open plan living space and fully fitted kitchen, there is a bathroom with shower over bath and a large communal roof terrace.

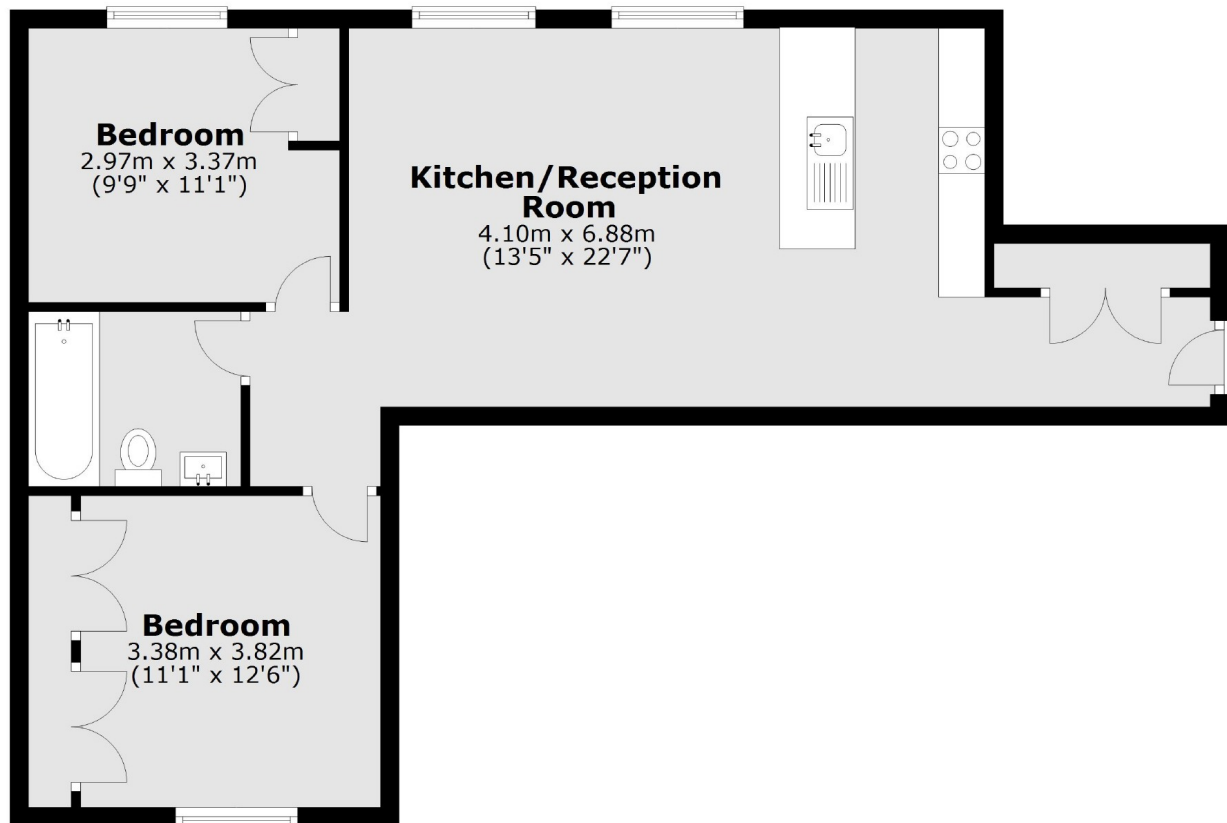
Watson Studios are located off Elm Grove. Elm Grove is cul-de-sac just over half a mile from Wimbledon Broadway and station allowing easy access to the town centre's restaurants and shops.

Features

- Two Bedrooms
- One Bathroom
- Top Floor
- Roof Terrace
- Wooden Floors
- Modern Throughout

Elm Grove, London, SW19

Second Floor



Total area: approx. 63.3 sq. metres (681.6 sq. feet)