



Atkinson Close, SW20
£900,000

Dexters



Atkinson Close, SW20

A two double bedroom, two bathroom ground floor apartment, complete with an underground parking space, manicured communal gardens and no onward chain.

The communal areas include, visitors parking, allocated underground parking for the flat, manicured communal gardens, a concierge service, meeting rooms that are available for hire, a cinema, library and well equipped gym. The property is also offered with no onward chain.

Lanesborough House is considered to be one of the more desirable buildings within the Chambers Hill Park development, as it comprises of just a few apartments, keeping a wonderfully boutique feel, and close knit community.

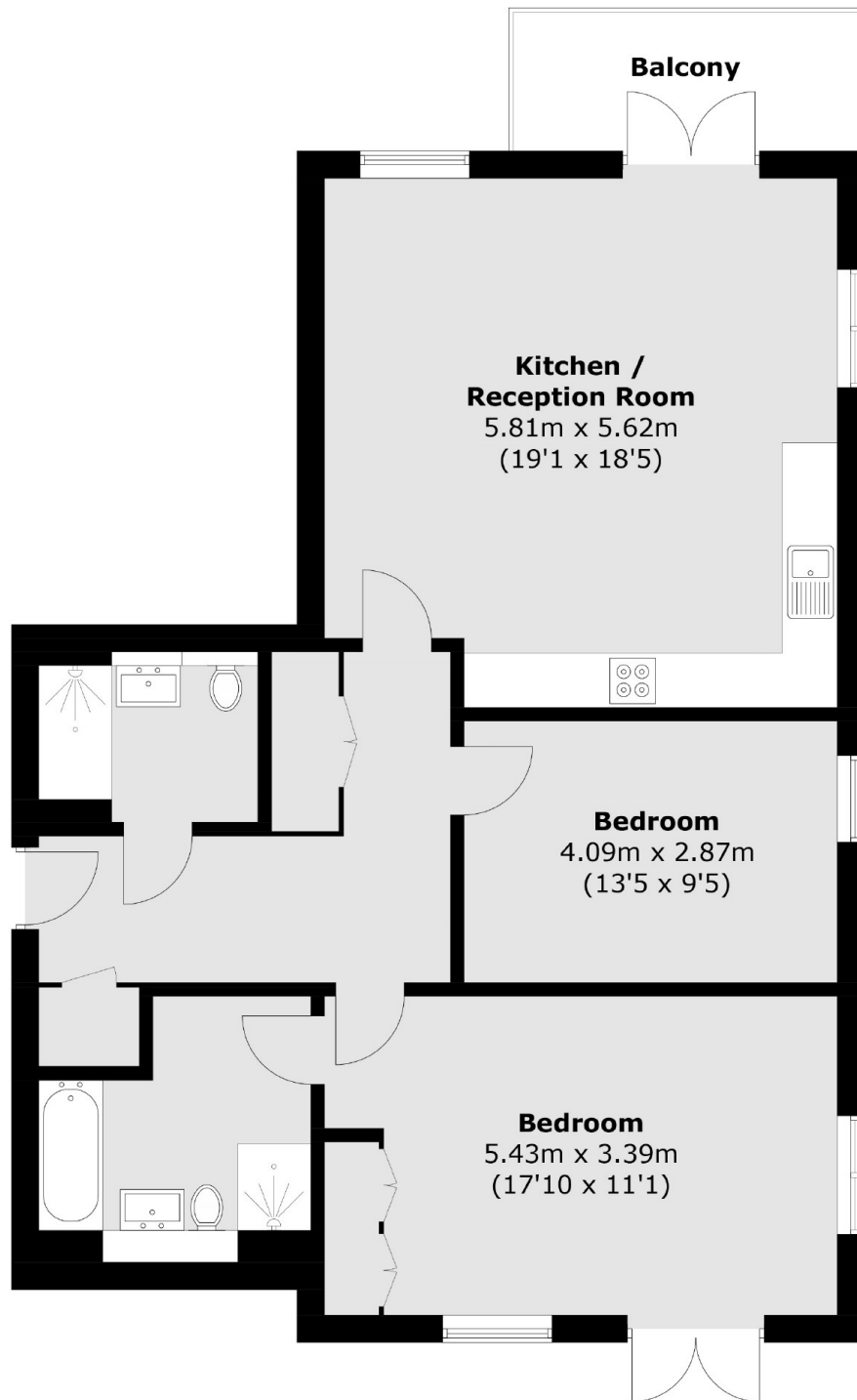
Wimbledon Common and Village are within walking distance offering an array of designer shops, boutiques, historic pubs, restaurants and green open spaces. The area has some highly regarded and sought after local and independent schools.

Features

- Two Double Bedrooms
- Two Bathrooms
- Underground Parking Space
- Cinema, Gym And Gardens
- Concierge Service
- No Onward Chain



Atkinson Close,
London, SW20



Total area (approx.): 91.7 sq. m (987.0 sq. ft)
Balcony: 5.8 sq. m (62.4 sq. ft)

Dexters

Wimbledon
12 The Broadway
London
SW19 1RF
Sales
020 8545 8580

Energy Rating: . We aim to make our particulars both accurate and reliable. However they are not guaranteed; nor do they form part of an offer or contract. If you require clarification on any points then please contact us, especially if you're traveling some distance to view. Please note that appliances and heating systems have not been tested and therefore no warranties can be given as to their good working order.

 **RICS** | Regulated
Estate Agent
and Letting Agent

[dexters.co.uk](https://www.dexters.co.uk)