

Montague Road, SW19

£395,000

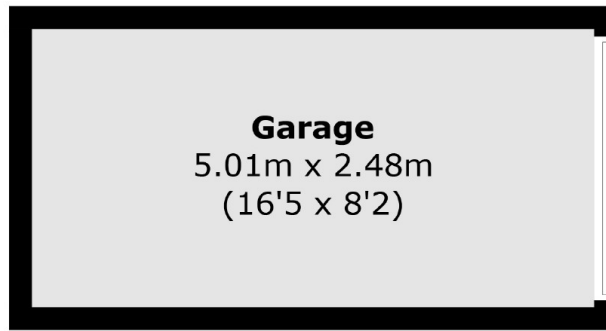
A one double bedroom second floor apartment, refurbished to a superb standard. Located in the heart of Wimbledon Town, the property further benefits from a garage and a long lease.

Located on a quiet street just off The Broadway, equidistant to both the district line and northern line. Shops, bars and delicious restaurants are all on your doorstep, whilst being in the catchment for outstanding schools.

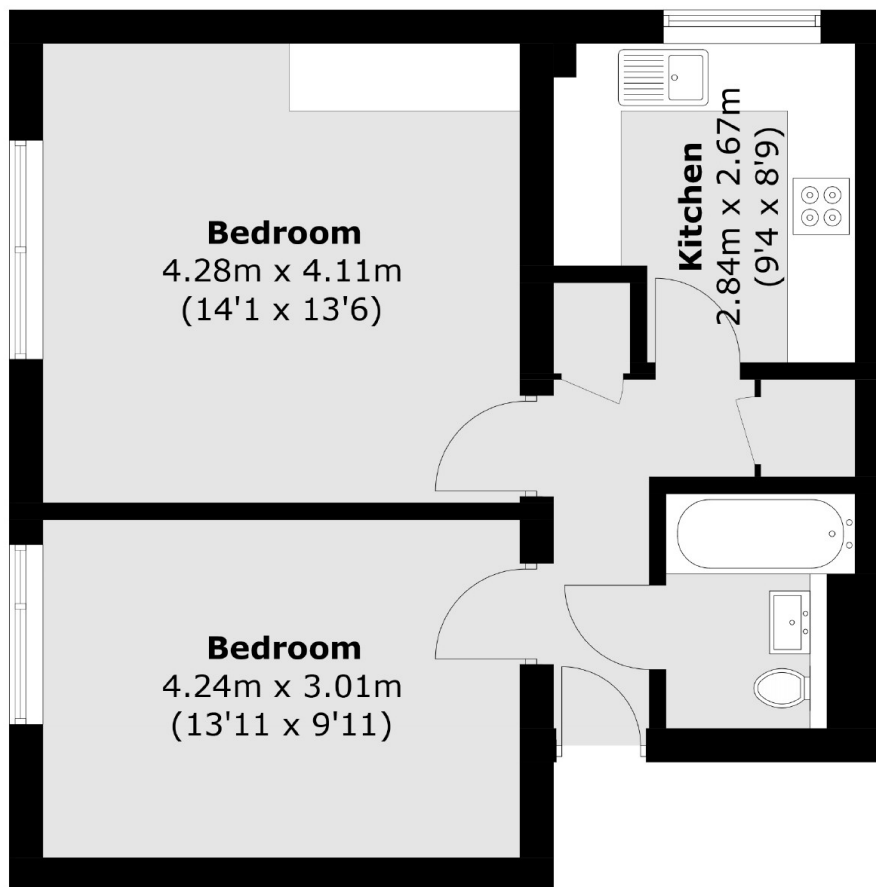
Features

- One Double Bedroom
- Fully Refurbished
- First Floor
- Garage & Parking Space
- Close To District Line
- Centre Of Wimbledon

Montague Road, London, SW19



(Not Shown In Actual
Location / Orientation)



Total area (approx.): 49.0 sq. m (527.4 sq. ft)
Garage: 12.4 sq. m (133.5 sq. ft)