

Arthur Road, SW19

£625,000

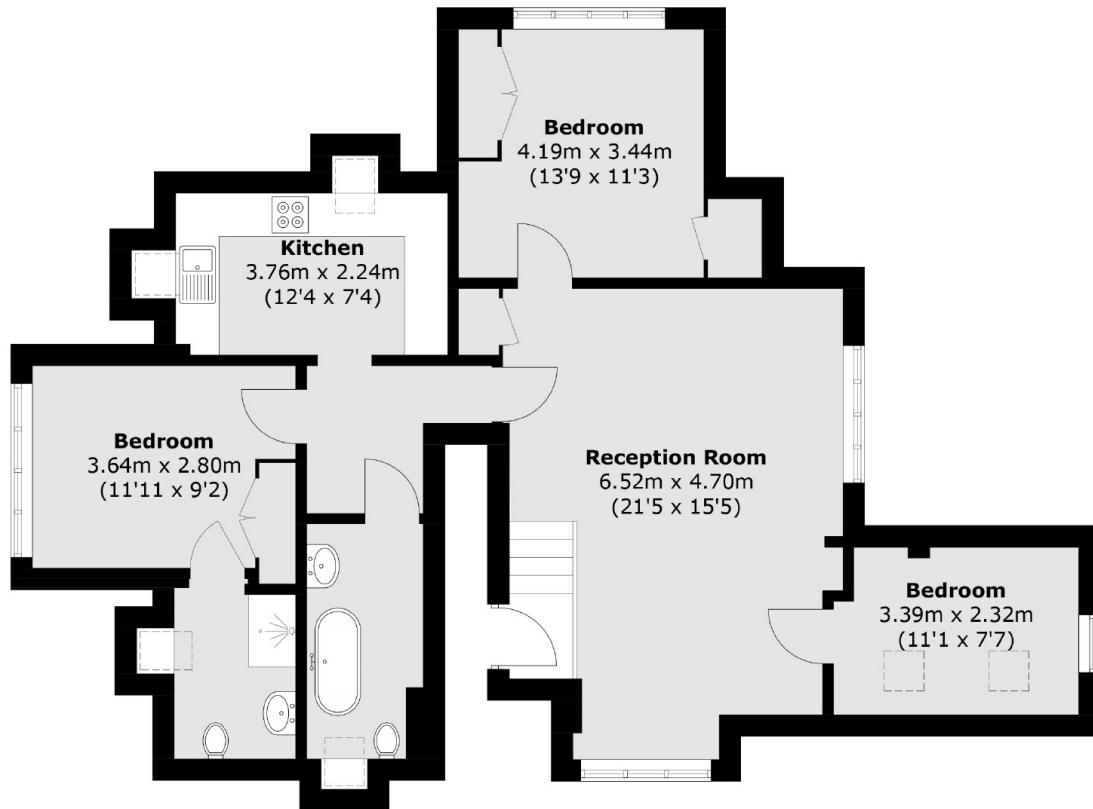
A two double bedroom, two bathroom Edwardian conversion, complete with a long lease, allocated parking, communal gardens and expansive views over the entirety of Central London.

Perfectly located overlooking the boating lake at Wimbledon Park, the park and the District Line station are moments away. The local area has everything you need, including Wimbledon Village a short walk away and easy access to Wimbledon, Earlsfield and Southfields.

Features

- Two Double Bedrooms
- Two Bathrooms
- Breathtaking London Views
- Communal Gardens
- Allocated Parking
- No Onward Chain

Arthur Road, London, SW19



Total area (approx.): 85.4 sq. m (919.2 sq. ft)

Dexters

Wimbledon
12 The Broadway
London
SW19 1RF
Sales
020 8545 8580

Energy Rating: . We aim to make our particulars both accurate and reliable. However they are not guaranteed; nor do they form part of an offer or contract. If you require clarification on any points then please contact us, especially if you're traveling some distance to view. Please note that appliances and heating systems have not been tested and therefore no warranties can be given as to their good working order.

 **RICS** | Regulated
Estate Agent
and Letting Agent

[dexters.co.uk](https://www.dexters.co.uk)