



## Haydons Road, SW19

### £325,000

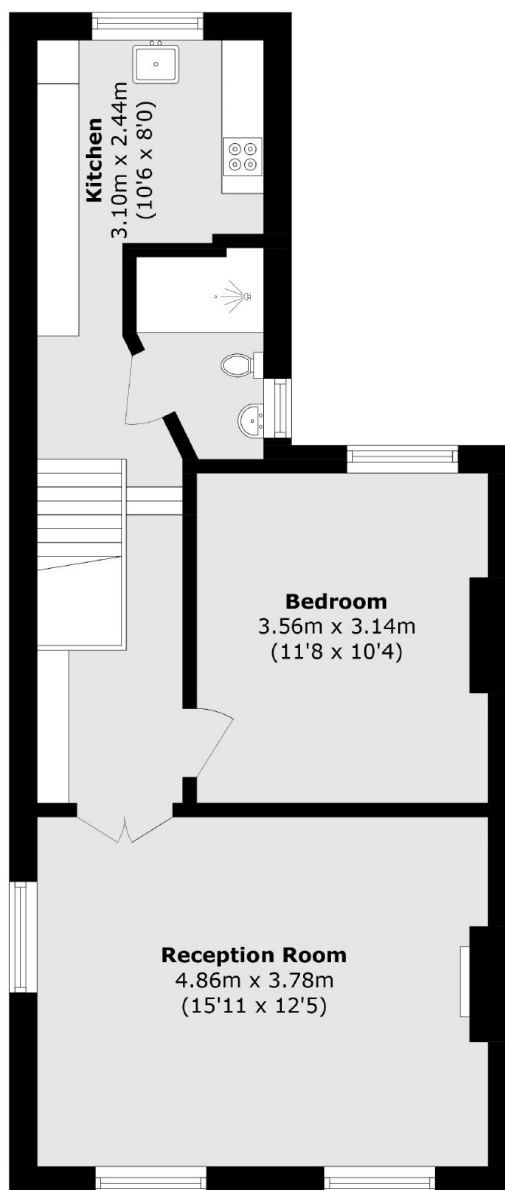
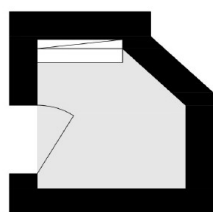
This is a large split level one double bedroom first floor period apartment with exposed brick work, a separate kitchen, reception room with high ceiling and period fireplace.

Located on the edge of South Park Gardens area, with nearby transport links to London from the ThamesLink, District Line in Wimbledon town centre and Northern Line within a short distance away.

### Features

Period Conversion  
One Bedroom  
Top Floor  
Private Entrance  
Split Level

# Haydons Road, London, SW19



**Ground Floor**

**First Floor**

Total area (approx.): 50 sq. m (538.2 sq. ft)