



Beaford Grove, SW20

£750,000

A 1930's three bedroom, mid terrace house, located in a popular street in Wimbledon Chase. There is a large rear garden, with the potential to extend the house in to the loft and to the rear.

Beaford Grove is a quiet residential street, equidistant to both Wimbledon Chase and South Merton train stations. With the famous National Trust Morden Hall Park, Cannon Hill Common, and Wimbledon town centre just a short distance away.

Features

- Three Bedrooms
- Huge Extension Potential
- Large Rear Garden
- Off Street Parking Potential
- Quiet Tree Lined Street
- Mid Terrace 1930's



Beaford Grove, SW20

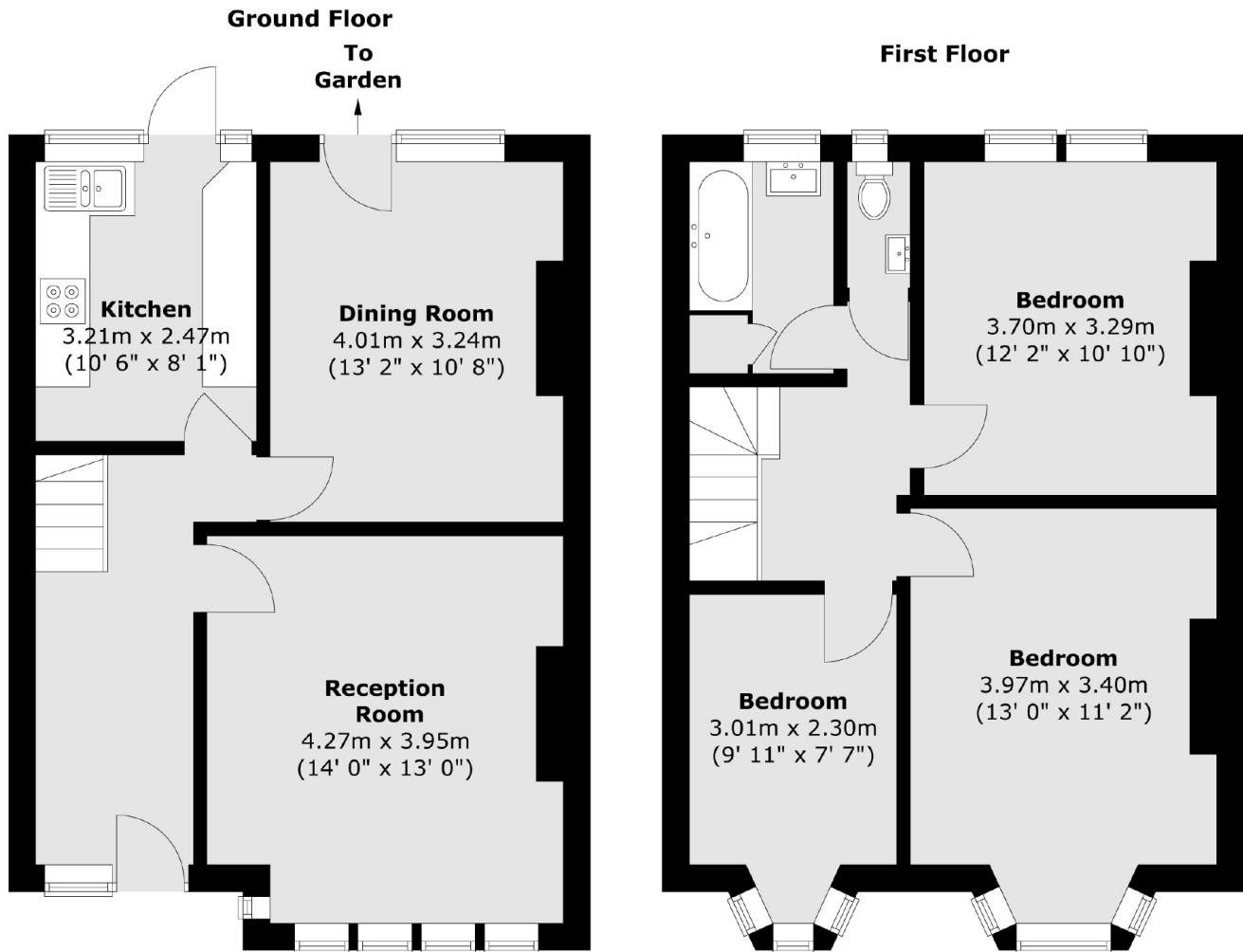
The ground floor has a separate reception to the front, with a separate dining room and a separate kitchen to the rear. Many home owners have taken advantage of the garden size and extended to the rear to create a huge open, kitchen/reception room.

The first floor has three bedrooms, two of which are doubles, with the third a single bedroom or perfect home office. The loft is able to be converted to create a superb master bedroom with an ensuite bathroom.

The garden faces north west, with a lane at the back providing private access which is perfect for bringing bikes through or of course building work, as and when you look to undertake any. The front garden has potential to be converted to offer off street parking.



Beaford Grove, London, SW20



Total area (approx.) : 95.2 sq. m (1025 sq. ft)