



## Trinity Road, SW19

### £650,000

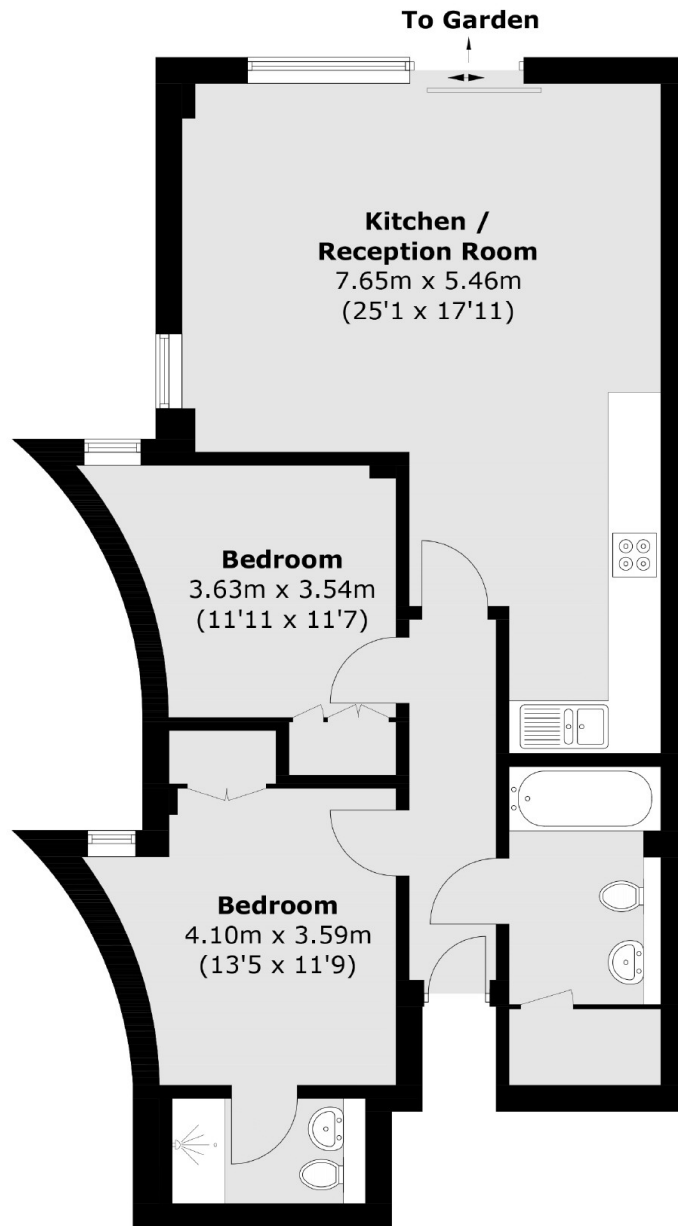
A two double bedroom, two bathroom ground floor new build apartment. The property has a large private garden, with access from the open reception room, via sliding doors.

Located in the heart of Wimbledon town, with South Park Gardens just on your doorstep. This area is highly sought after with a fantastic selection of High Street brand shops, restaurants and excellent transport links.

### Features

- Two Double Bedrooms
- Two Bathrooms
- Private Rear Garden
- Central Wimbledon Location
- New Build Apartment
- Ground Floor

# Trinity Road, London, SW19



## Ground Floor

Total area (approx.): 67.5 sq. m (726.6 sq. ft)

# Dexters

Wimbledon  
12 The Broadway  
London  
SW19 1RF  
Sales  
020 8545 8580

Energy Rating: C. We aim to make our particulars both accurate and reliable. However they are not guaranteed; nor do they form part of an offer or contract. If you require clarification on any points then please contact us, especially if you're traveling some distance to view. Please note that appliances and heating systems have not been tested and therefore no warranties can be given as to their good working order.

 **RICS** | Regulated  
Estate Agent  
and Letting Agent

[dexters.co.uk](https://www.dexters.co.uk)