



**Southey Road, SW19**  
**£995,000**

**Dexters**



## Southey Road, SW19

This charming and spacious triplex property has four bedrooms, two bathroom, triplex maisonette, complete with a large cellar. The property has its own front door, private rear garden and is located in the centre of Wimbledon Town.

The front door opens to your own entrance hall, with access to the cellar, measuring over fifty square feet and allowing storage for sports equipment, wine and ultimately acting as loft style storage. Stairs then lead to the first floor.

The first floor offers an open kitchen/ reception room, with a separate reception room, double bedroom and a bathroom, with the second floor housing two double bedrooms, a single bedroom and a bathroom.

The rear garden is private, offering a wonderful space to escape to, with near fifteen hundred square feet of space inside the property and the rear garden, they make the perfect pair for a family, couple or a place to raise children, with great schools on your doorstep.

Southey Road is a quiet residential street, just a short walk from the Wimbledon Town Centre with its highly regarded range of bars, restaurants and shopping facilities in Centre Court alongside great local schools.

### Features

Circa 300 Sqft Of Storage

Four Bedrooms

Two Bathrooms

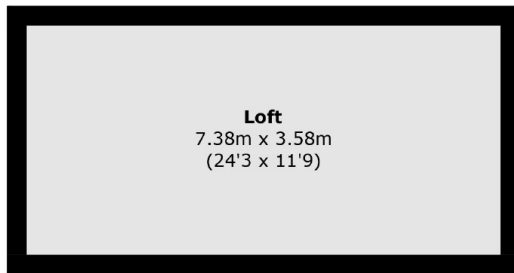
Private Rear Garden

Split Level

Quiet Central Street

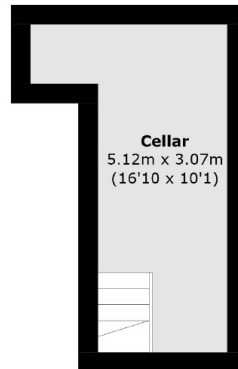


# Southey Road, London, SW19

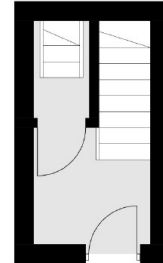


**Loft**  
7.38m x 3.58m  
(24'3 x 11'9)

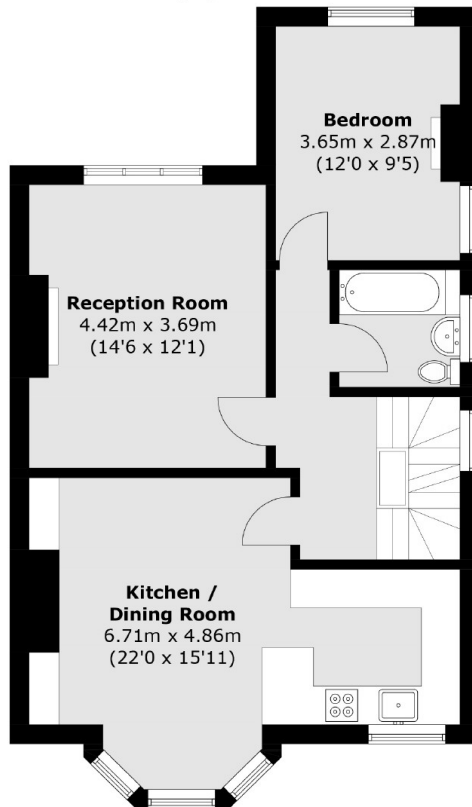
**Loft**



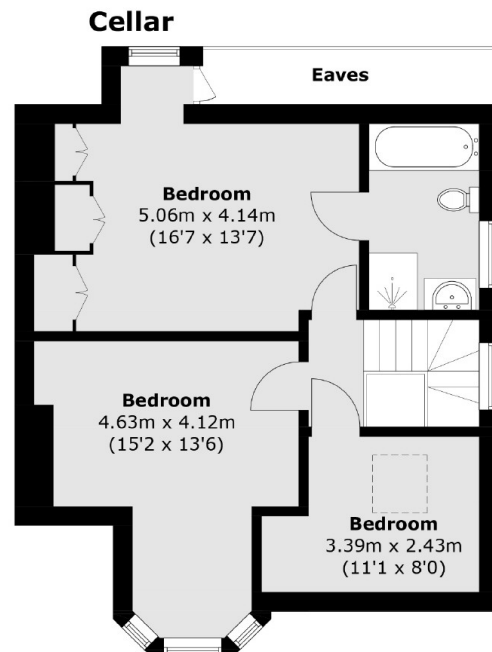
**Cellar**  
5.12m x 3.07m  
(16'10 x 10'1)



**Ground Floor**



**First Floor**



**Second Floor**

Total area (approx.): 134.2 sq. m (1,444.5 sq. ft)  
(Including Cellar & Excluding Loft / Eaves)