



Florence Road, SW19

£1,150,000

Dexters



Florence Road, SW19

A beautiful three double bedroom Victorian terrace house, located in South Park Gardens. Extended to the rear and in to the loft, the garden faces south and has a high spec home office.

The ground floor of the house offers a through reception room, with an expansive reception/ dining room, which is partially separated from the kitchen.

French doors at the rear of the house open onto a fully landscaped south facing garden, complete with a bespoke garden room which is wired with electricity, perfect for a separate work space.

The first floor consists of two large double bedrooms and a family bathroom. The loft has been converted to an exceptional standard with eaves storage and an ensuite shower room.

Nestled in the highly regarded 'South Park Gardens' grid, offering quick access to Wimbledon Town Centre, district and Northern Line Tube and Haydons Road Themes Link. There are also a number of outstanding primary Schools nearby.

Features

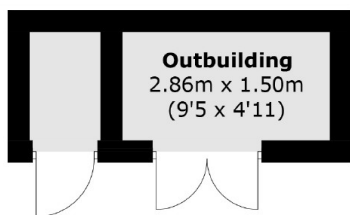
- Three Double Bedrooms
- South Facing Garden
- Two Bathrooms
- Period House
- Quite Road
- Rear And Loft Extended





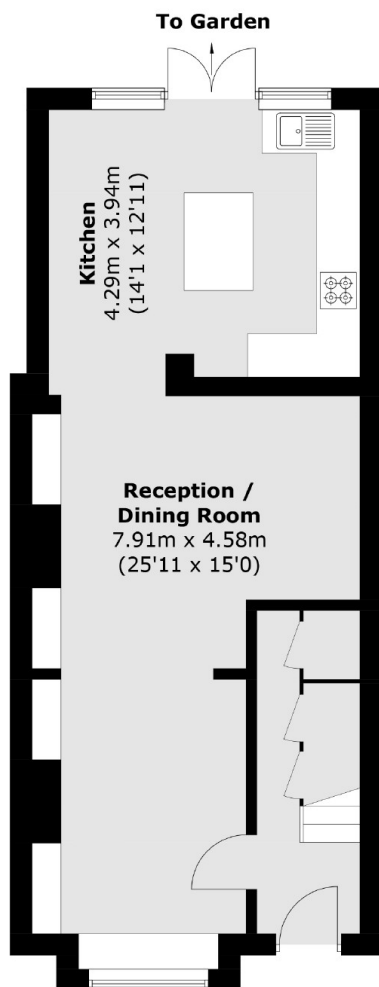


Florence Road, London, SW19

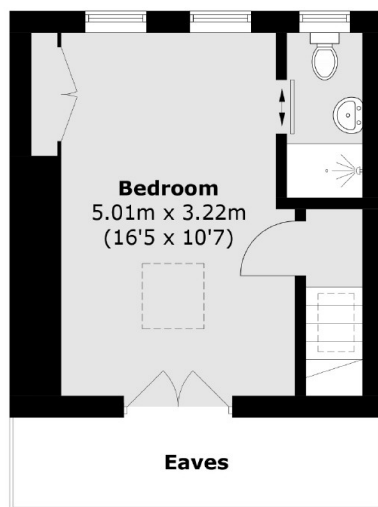


(Not Shown In Actual
Location / Orientation)

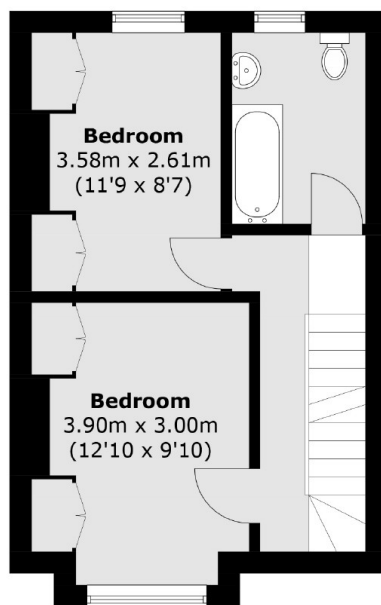
Outbuilding



Ground Floor



Second Floor



First Floor

Total area (approx.): 108.6 sq. m (1,168.9 sq. ft)
Outbuilding: 6.1 sq. m (65.7 sq. ft)
(Excluding Eaves)

Dexters

Wimbledon
12 The Broadway
London
SW19 1RF
Sales
020 8545 8580

Energy Rating: D. We aim to make our particulars both accurate and reliable. However they are not guaranteed; nor do they form part of an offer or contract. If you require clarification on any points then please contact us, especially if you're traveling some distance to view. Please note that appliances and heating systems have not been tested and therefore no warranties can be given as to their good working order.

RICS Regulated
Estate Agent
and Letting Agent

dexters.co.uk