



Windmill Road, SW19

£1,000,000

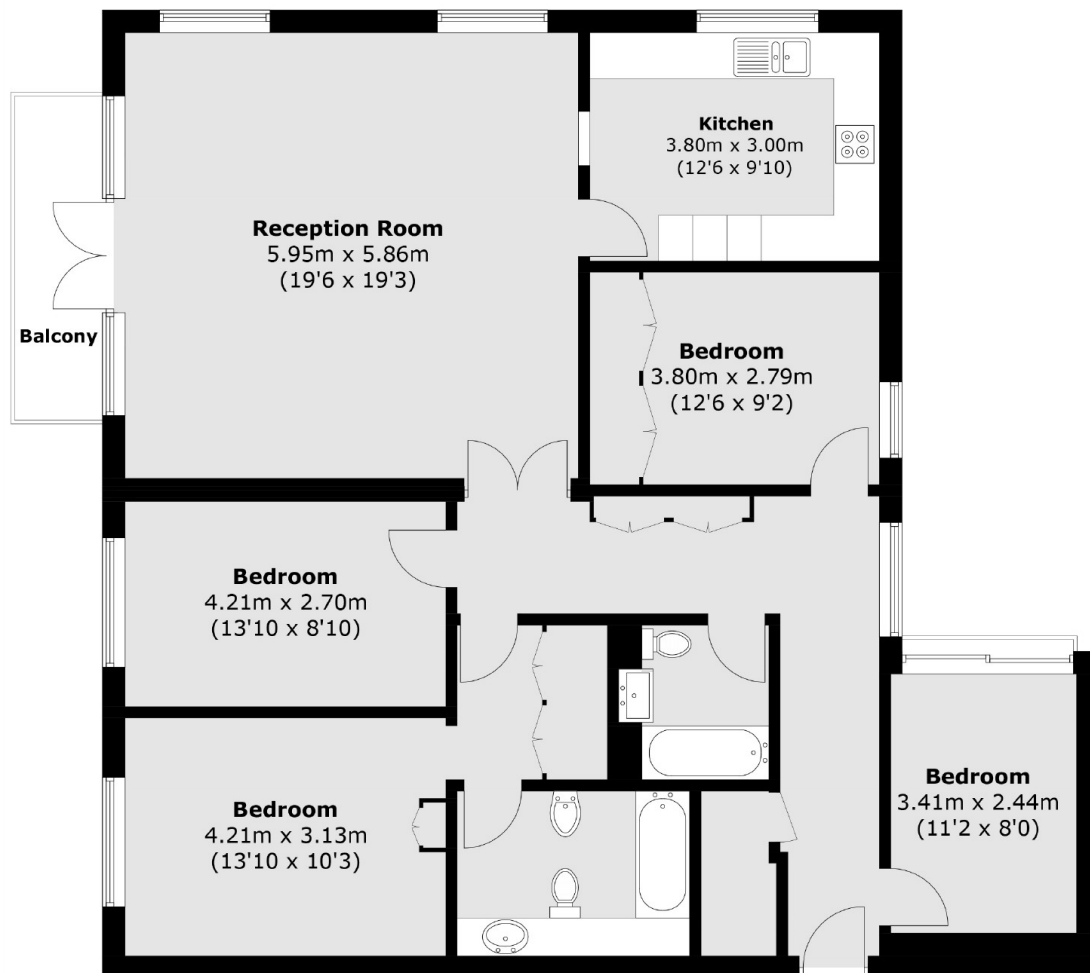
A four double bedroom, two bathroom apartment, located within a gated development, overlooking Wimbledon Common. There is underground parking, a private terrace, a lift and no onward chain.

The Clockhouse is nestled beside Wimbledon Common between Putney and Wimbledon Village. The area is renowned for outstanding schools and has some fantastic boutique shops and great restaurants.

Features

- Four Double Bedrooms
- Two Bathrooms
- No Onward Chain
- Underground Parking
- Large Terrace
- Beside Wimbledon Common

Windmill Road, London, SW19



Total area (approx.): 129.3 sq. m (1,391.8 sq. ft)
Balcony : 4.9 sq. m (52.7 sq. ft)