

Morden Road, SW19

£425,000

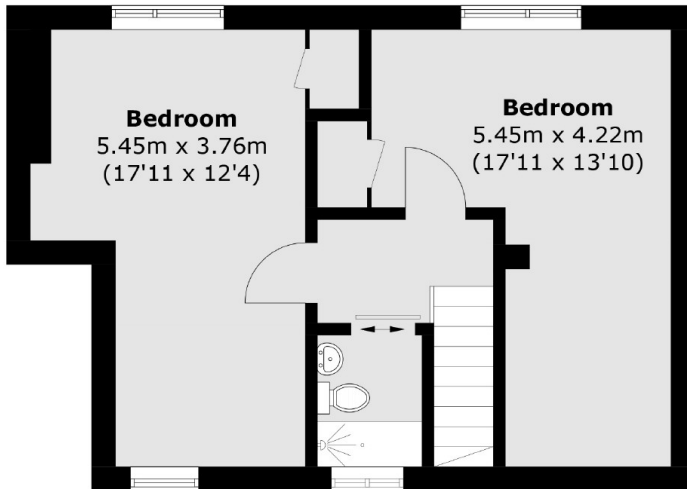
An incredibly large, three bedroom, two bathroom, fully renovated split level apartment. The property has a private terrace with far reaching views and measures near 1,100 square feet.

Parkleigh Court is nearby to the well known Merton Abbey Mills and the green open spaces of Morden Hall Park. Transport is easily accessible via South Wimbledon (Northern Line) as well as convenient bus routes at the base of the road.

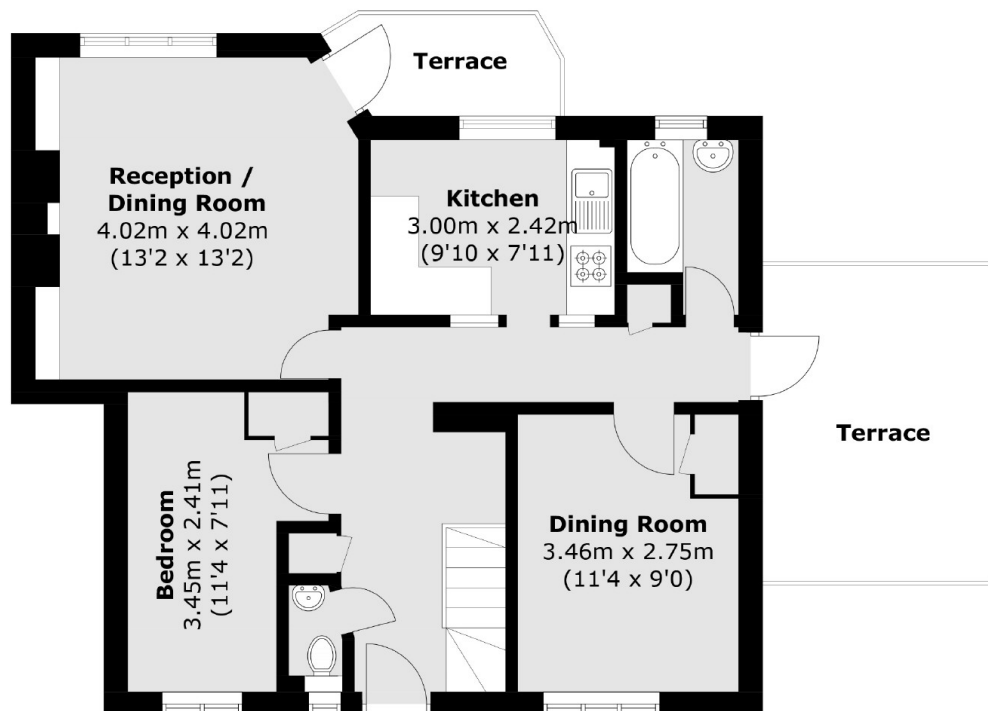
Features

- Three Bedrooms
- Private Terrace
- Near 1,100 Square Feet
- Fully Renovated
- Split Level Apartment
- Close To Northern Line

Morden Road, London, SW19



Fourth Floor



Third Floor

Total area (approx.): 100.3 sq. m (1,079.7 sq. ft)
Terrace area (approx.): 14.5 sq. m (156.1 sq. ft)