



Sunlight Close, SW19

£900,000

Dexters



Sunlight Close, SW19

A three bedroom, two bathroom, link detached house. The house occupies an enviable position in the development, with a large garden, a home gym and a home office. The property is sold with two allocated parking spaces.

The ground floor has a large open plan reception/ dining room, with a downstairs w/c and a separate, modern kitchen to the rear.

The first floor has three bedrooms, two of which are great doubles, with a smaller room, ideal for a nursery. The family bathroom is modern, with the loft having permission granted for a full conversion, with a bathroom.

The link detached aspect, the two allocated off street parking spaces, tucked away location within the development and the side access and large garden, are all superb features of this house. In addition the owners have created a home gym studio and a work from home study space.

Sunlight Close is a quiet, desirable cul de sac nestled within the South Park Garden area. The area has highly sought after schools, a fantastic array of shops and transport is easily accessible nearby at Wimbledon Broadway.

Features

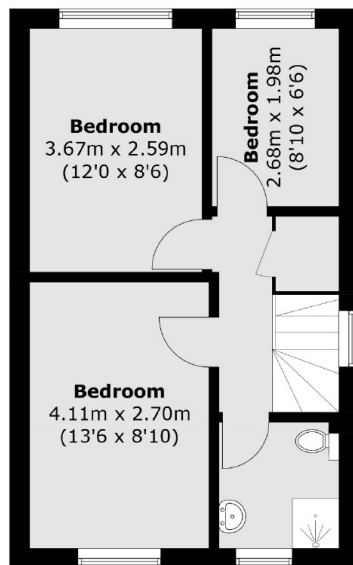
- Three Bedrooms
- Desirable Cul De Sac
- Large Corner Plot Garden
- Two Parking Spaces
- Loft Conversion Granted
- South Park Gardens Area



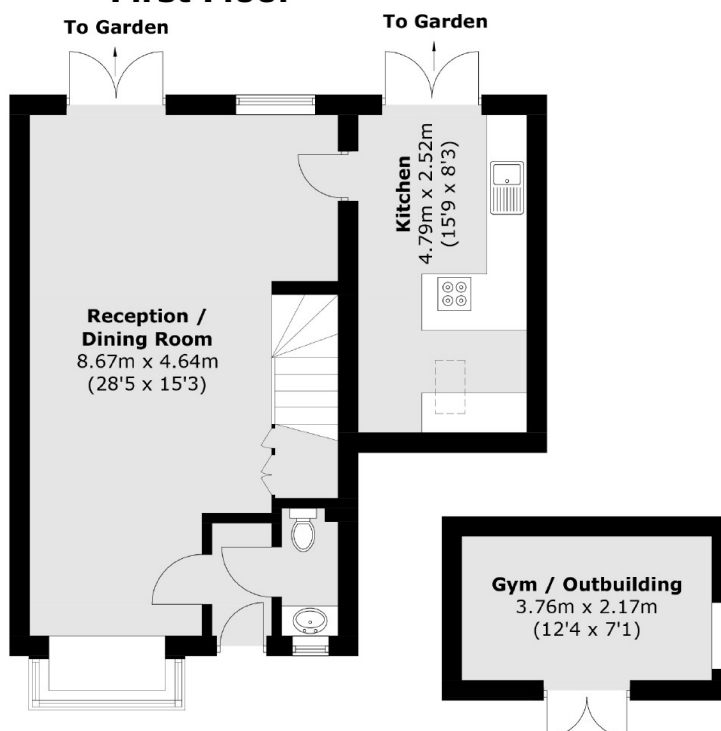




Sunlight Close, London, SW19



First Floor



Ground Floor

**(Not Shown In Actual
Location / Orientation)**

Total area (approx.): 87.0 sq. m (936.4 sq. ft)
Outbuilding : 8.3 sq. m (89.3 sq. ft)

Dexters

Wimbledon
12 The Broadway
London
SW19 1RF
Sales
020 8545 8580

Energy Rating: D. We aim to make our particulars both accurate and reliable. However they are not guaranteed; nor do they form part of an offer or contract. If you require clarification on any points then please contact us, especially if you're traveling some distance to view. Please note that appliances and heating systems have not been tested and therefore no warranties can be given as to their good working order.

 **RICS** | Regulated
Estate Agent
and Letting Agent

[dexters.co.uk](https://www.dexters.co.uk)