

Evelyn Road, SW19

£990,000

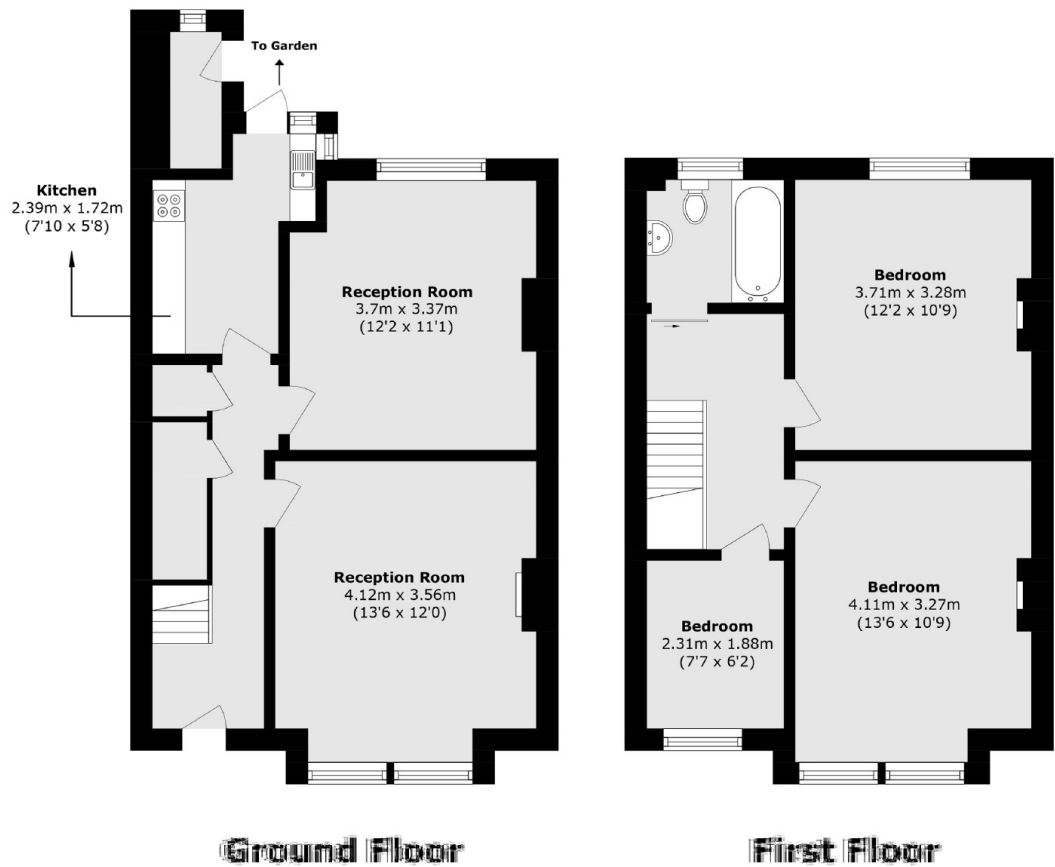
This is a three bedroom Victorian family home with two separate reception rooms, feature period fireplace and high ceilings. The property offers scope for further expansion subject to the normal planning permission. The property is being sold with no onward chain.

Evelyn Road is situated in the highly regarded 'South Park Gardens' grid, offering easy access to Wimbledon Town Centre, district and northern line tube and Haydons Road Thames Link. There are also a number of outstanding Primary Schools nearby.

Features

Victorian Family Home
Three Bedrooms
Two Receptions
Period Features
Scope to Extend (STTP)
Chain Free

Evelyn Road,
London, SW19



Internal Total area (approx.): 822.2 sq. m (8848 sq. ft.)
External Storage (approx.): 11.5 sq. m (124.1 sq. ft.)
Total area (approx.): 834 sq. m (8972 sq. ft.)