



## Kingston Road, SW19

£300,000

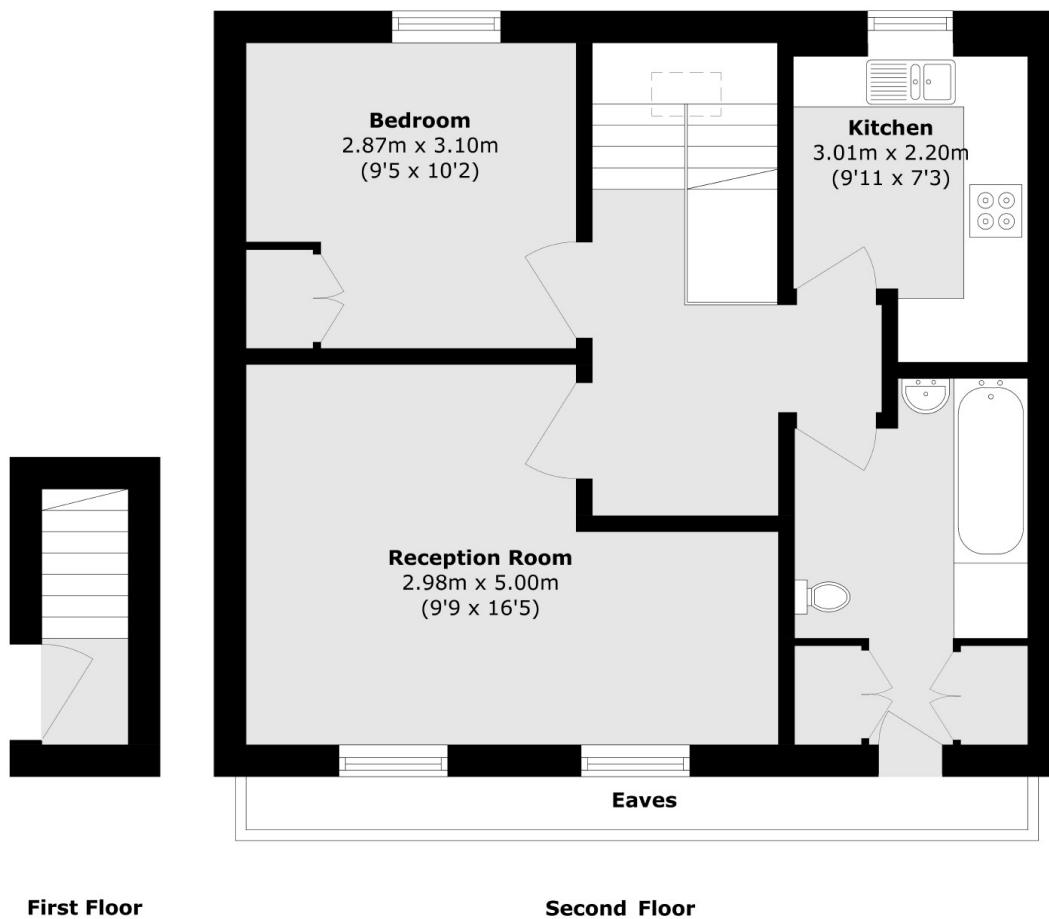
A one double bedroom, top floor Victorian conversion complete with a long lease. The property further benefits from a large loft space and is offered to the market with no onward chain

Perfectly located for Wimbledon Town Centre and Dundonald Park. Close to transport links with Wimbledon Tube, Overground Station and The Broadway offering an eclectic range of restaurants and bars.

### Features

- One Double Bedroom
- Top Floor
- Victorian Conversion
- Long Lease
- Excellent Transport Links
- No Onward Chain

Kingston Road,  
London, SW19



Total area (approx.): 50.3 sq. m (541.4 sq. ft)  
(Excluding Eaves)

**Dexters**

Wimbledon  
12 The Broadway  
London  
SW19 1RF  
Sales  
020 8545 8580

Energy Rating: D. We aim to make our particulars both accurate and reliable. However they are not guaranteed; nor do they form part of an offer or contract. If you require clarification on any points then please contact us, especially if you're traveling some distance to view. Please note that appliances and heating systems have not been tested and therefore no warranties can be given as to their good working order.

**RICS** | Regulated  
Estate Agent  
and Letting Agent

[dexters.co.uk](http://dexters.co.uk)