



## Kingston Road, SW20

### £475,000

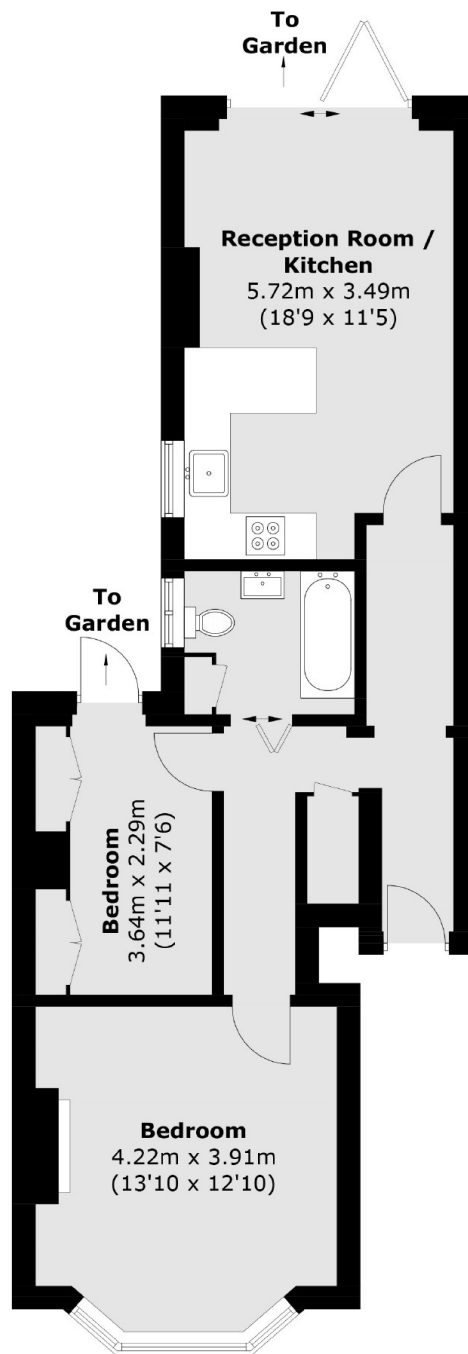
An exceptional two bedroom ground floor maisonette. The property has been renovated to an incredible standard, with an open kitchen/reception room and bi-folding doors to a landscaped, private, south facing garden.

Conveniently situated close to Wimbledon Town Centre, just moments away from Wimbledon Tube and Overground Station and a great range of restaurants and bars.

### Features

- Two Bedrooms
- South Facing Garden
- Edwardian Conversion
- Open Kitchen/ Reception
- Ground Floor Maisonette
- Extended Lease

# Kingston Road, London, SW20



Total area (approx.): 61.1 sq. m (658.0 sq. ft)

## Dexters

Wimbledon  
12 The Broadway  
London  
SW19 1RF  
Sales  
020 8545 8580

Energy Rating: D. We aim to make our particulars both accurate and reliable. However they are not guaranteed; nor do they form part of an offer or contract. If you require clarification on any points then please contact us, especially if you're traveling some distance to view. Please note that appliances and heating systems have not been tested and therefore no warranties can be given as to their good working order.

 **RICS** | Regulated  
Estate Agent  
and Letting Agent

[dexters.co.uk](https://www.dexters.co.uk)