



Laburnum Road, SW19

£750,000

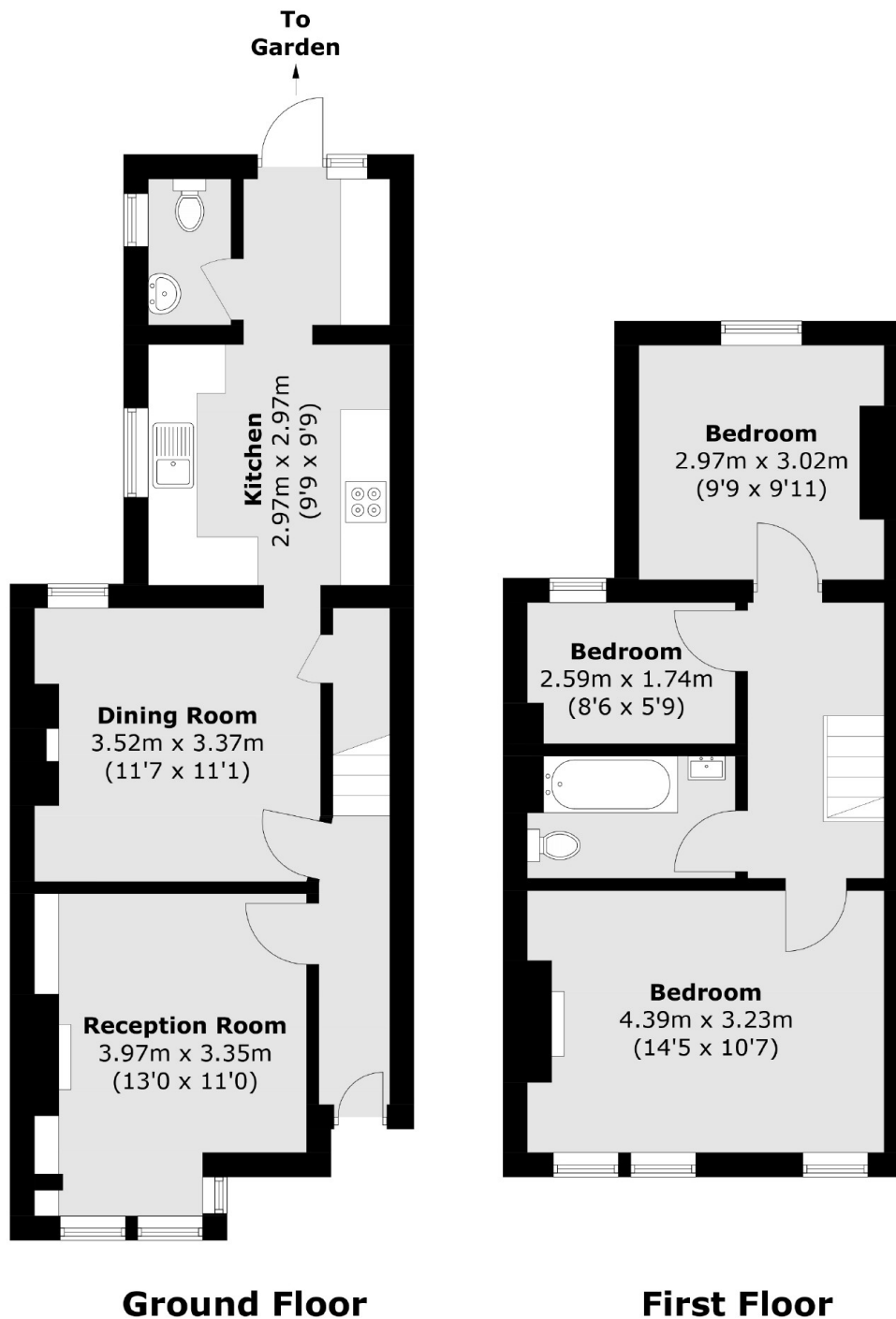
A three bedroom, end of terrace, bay-fronted Victorian house. The house has been modernised throughout, yet still has potential for further expansion subject to the relevant planning permission.

Laburnum Road is a popular and quiet road between Wimbledon and Colliers Wood. Both Wandle Park and Haydons Recreation Grounds are nearby, with Northern Line and Thames Link just a stone's throw away.

Features

- Three Bedrooms
- Bay-Fronted
- Victorian
- Quiet Tree Lined Road
- Close To Northern Line
- Potential to Extend

Laburnum Road,
London, SW19



Total area (approx.): 85.6 sq. m (921.4 sq. ft)

Dexters

Wimbledon
12 The Broadway
London
SW19 1RF
Sales
020 8545 8580

Energy Rating: D. We aim to make our particulars both accurate and reliable. However they are not guaranteed; nor do they form part of an offer or contract. If you require clarification on any points then please contact us, especially if you're traveling some distance to view. Please note that appliances and heating systems have not been tested and therefore no warranties can be given as to their good working order.

 **RICS** | Regulated
Estate Agent
and Letting Agent

[dexters.co.uk](https://www.dexters.co.uk)