



Southey Road, SW19

£1,675,000

Dexters



Southey Road, SW19

The jewel in the crown has finally arrived to the market. Spanning near two thousand square feet, with a large private terrace, far reaching views, three bedrooms, three bathrooms and the lift arriving directly in the flat.

Occupying a substantial portion of the top floor of The Old Pelham School, converted in 1988, is this three double bedroom, three bathroom, split level apartment. The lift for the building arrives directly inside the apartment, for the most exclusive and luxury of touches.

The property has been updated to a luxury standard throughout, with incredible open plan spaces complete with skylights and Victorian period windows, offering the perfect balance between luxury modern finishes and original period, cosy charm. The separate reception room with access to the largest private terrace in the building offers a great reception area, flooded with light.

In addition to accessing the apartment from the communal entrance, there is a separate entrance from the first floor, arriving via a separate staircase to the master suite, offering built in wardrobes, ensuite bathroom and access to the rest of the apartment. There's secure bike storage, gym, sauna, parking and a share of the freehold.

Features

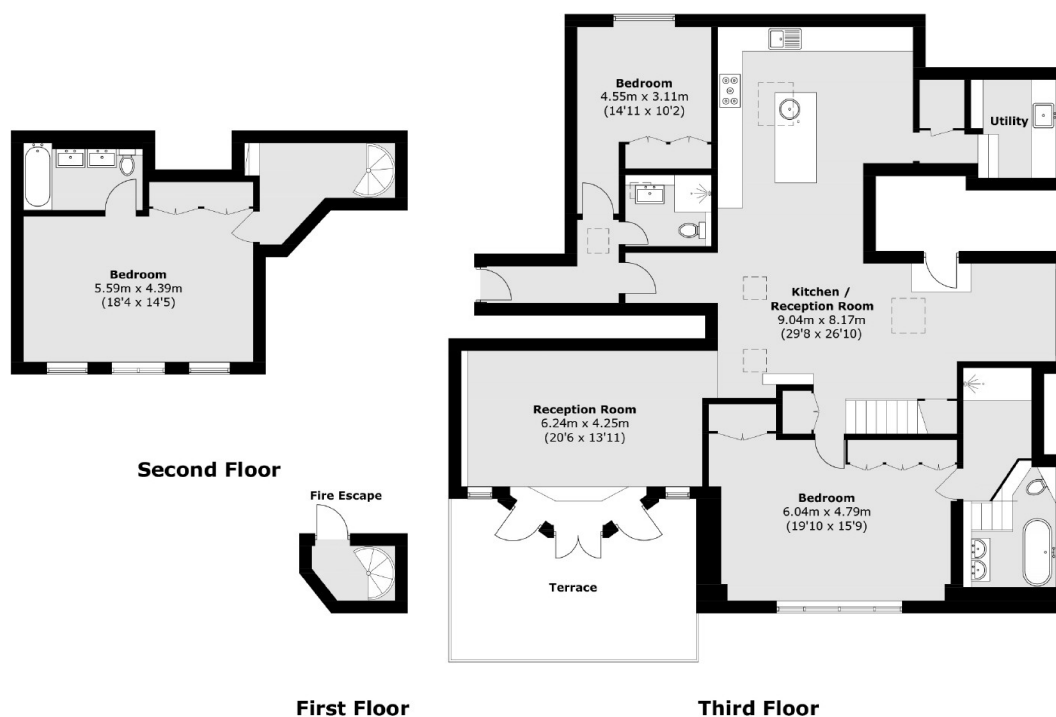
- Lift Directly To Apartment
- Off Street Parking
- Share Of Freehold
- Three Double Bedrooms
- Three Bathrooms
- No Onward Chain







Southey Road, London, SW19



Total area (approx.): 183.9 sq. m (1,979.5 sq. ft)
Terrace: 20.8 sq. m (223.9 sq. ft)