



## Merton Road, SW19

### £525,000

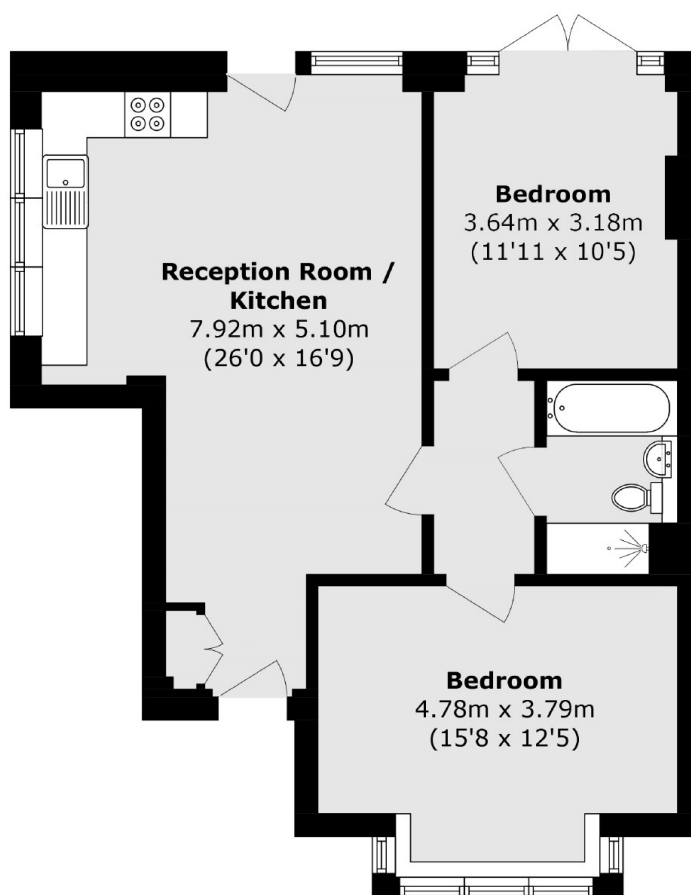
A two double bedroom, ground floor, newly built apartment, located just a short distance from South Wimbledon Station. The apartment is in excellent condition throughout, has an private garden and a long lease.

Located in one of London's most sought after postcodes, Merton Road is situated 0.2miles from the Northern Line Tube at South Wimbledon, giving direct access to Waterloo and The City, and also 0.6miles from Wimbledon.

### Features

- Two Double Bedrooms
- Ground Floor
- Modern Development
- Private Garden
- Near The Northern Line
- Long Lease

# Merton Road, London, SW19



Total area (approx.): 70.5 sq. m (758.8 sq. ft)