



Cromwell Road, SW19

£495,000

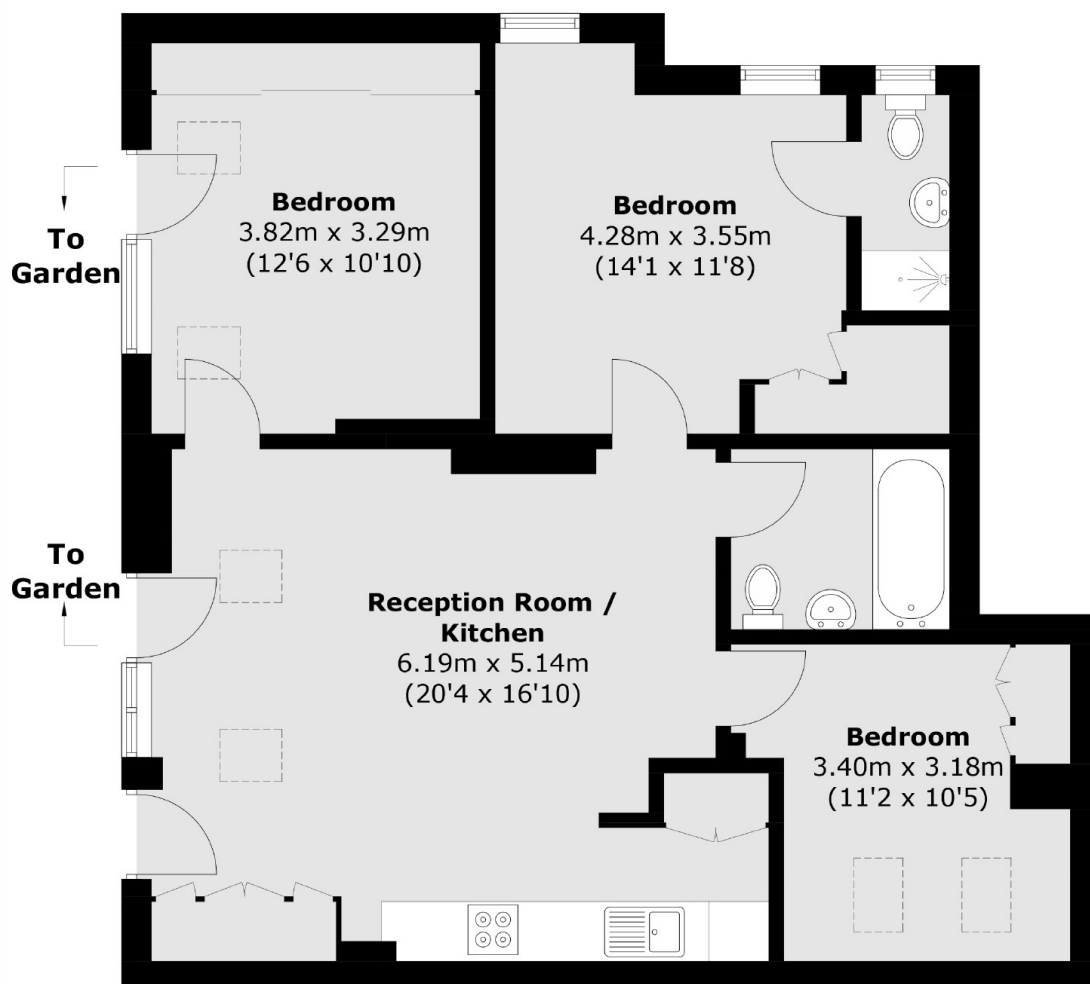
This is a modernised three bedroom, two bathroom period conversion with open plan kitchen and lounge with direct access to a large private patio.

Cromwell Road is a quiet street in a very convenient location. The area is highly sought-after due to the good schools and close proximity to green open spaces. Haydens Road Thames Link is 0.1 mile away and Wimbledon Park is 0.6 miles away.

Features

- Period Conversion
- Three Bedrooms
- Two Bathrooms
- Open Plan Kitchen/Lounge
- Large Private Patio
- Leasehold

Cromwell Road, London, SW19



Total area (approx.): 76.2 sq. m (820.2 sq. ft)

Dexters

Wimbledon
12 The Broadway
London
SW19 1RF
Sales
020 8545 8580

Energy Rating: C. We aim to make our particulars both accurate and reliable. However they are not guaranteed; nor do they form part of an offer or contract. If you require clarification on any points then please contact us, especially if you're traveling some distance to view. Please note that appliances and heating systems have not been tested and therefore no warranties can be given as to their good working order.

 **RICS** | Regulated
Estate Agent
and Letting Agent

[dexters.co.uk](https://www.dexters.co.uk)