



## Kingston Road, SW20

### £385,000

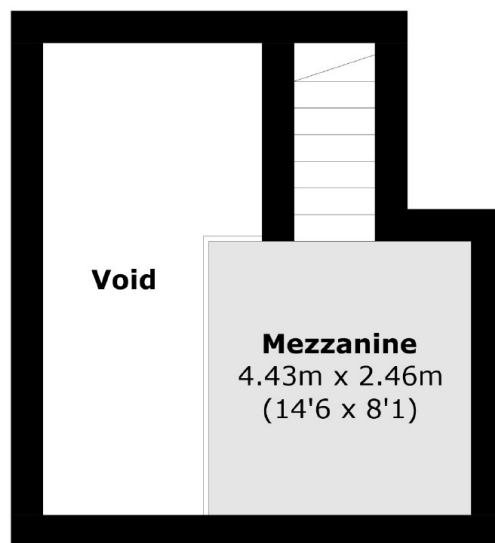
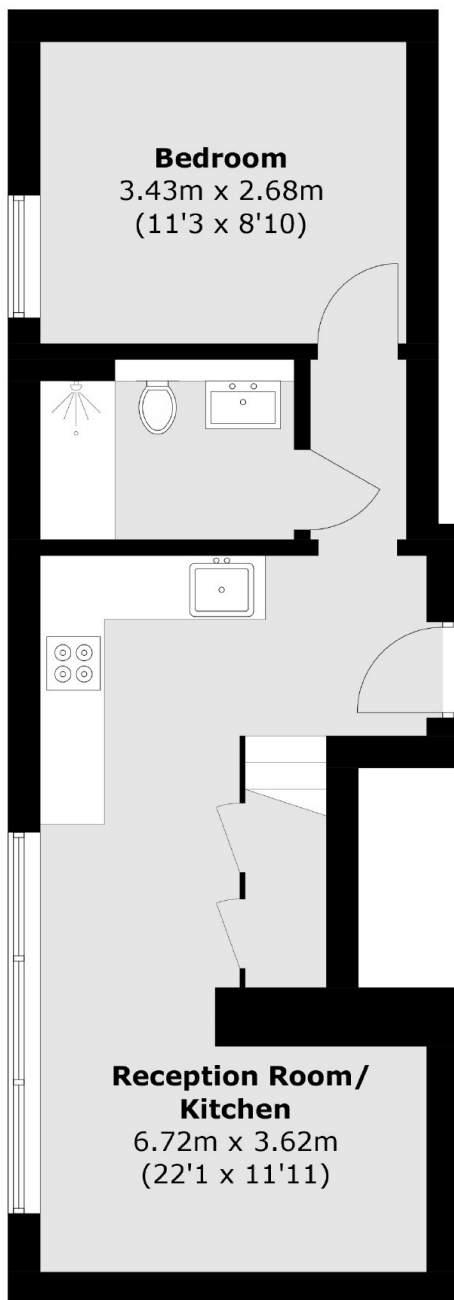
A modern one double bedroom, second floor apartment ideally located for access to Wimbledon Chase, Wimbledon Broadway and Raynes Park. The property is presented in immaculate condition throughout and further benefits from a mezzanine level.

Kingston Road is in a popular location conveniently located for Wimbledon Town Centre. It is close to the very popular Wimbledon Chase Primary School as well as the green open space of Dundonald Park.

### Features

- One Double Bedroom
- Second Floor Apartment
- Mezzanine Level
- High Specification Finish
- Modern Development
- Long Lease

# Kingston Road, London, SW20



## Second Floor

## Mezzanine

Total area (approx.): 46.2 sq. m (497.3 sq. ft)  
(Excluding Void)

# Dexters

Wimbledon  
12 The Broadway  
London  
SW19 1RF  
Sales  
020 8545 8580

Energy Rating: D. We aim to make our particulars both accurate and reliable. However they are not guaranteed; nor do they form part of an offer or contract. If you require clarification on any points then please contact us, especially if you're traveling some distance to view. Please note that appliances and heating systems have not been tested and therefore no warranties can be given as to their good working order.

 **RICS** | Regulated  
Estate Agent  
and Letting Agent

dexters.co.uk