



Haydon Park Road, SW19

£1,450,000

An opportunity to purchase this halls adjoining, semi-detached Victorian home situated in this desirable location within South Park Gardens. The house offers flexible accommodation arranged over three floors and is offered to the market with no forward chain.

Haydon Park Road is a quiet street in a very convenient location. The area is highly sought-after due to the good schools and close proximity to green open spaces. Haydens Road Thames Link is 0.1 mile away and Wimbledon Park is 0.6 miles away.

Features

- Victorian Home
- Semi Detached
- Six Bedrooms
- Off Street Parking
- Quiet Tree Lined Street
- No Forward Chain



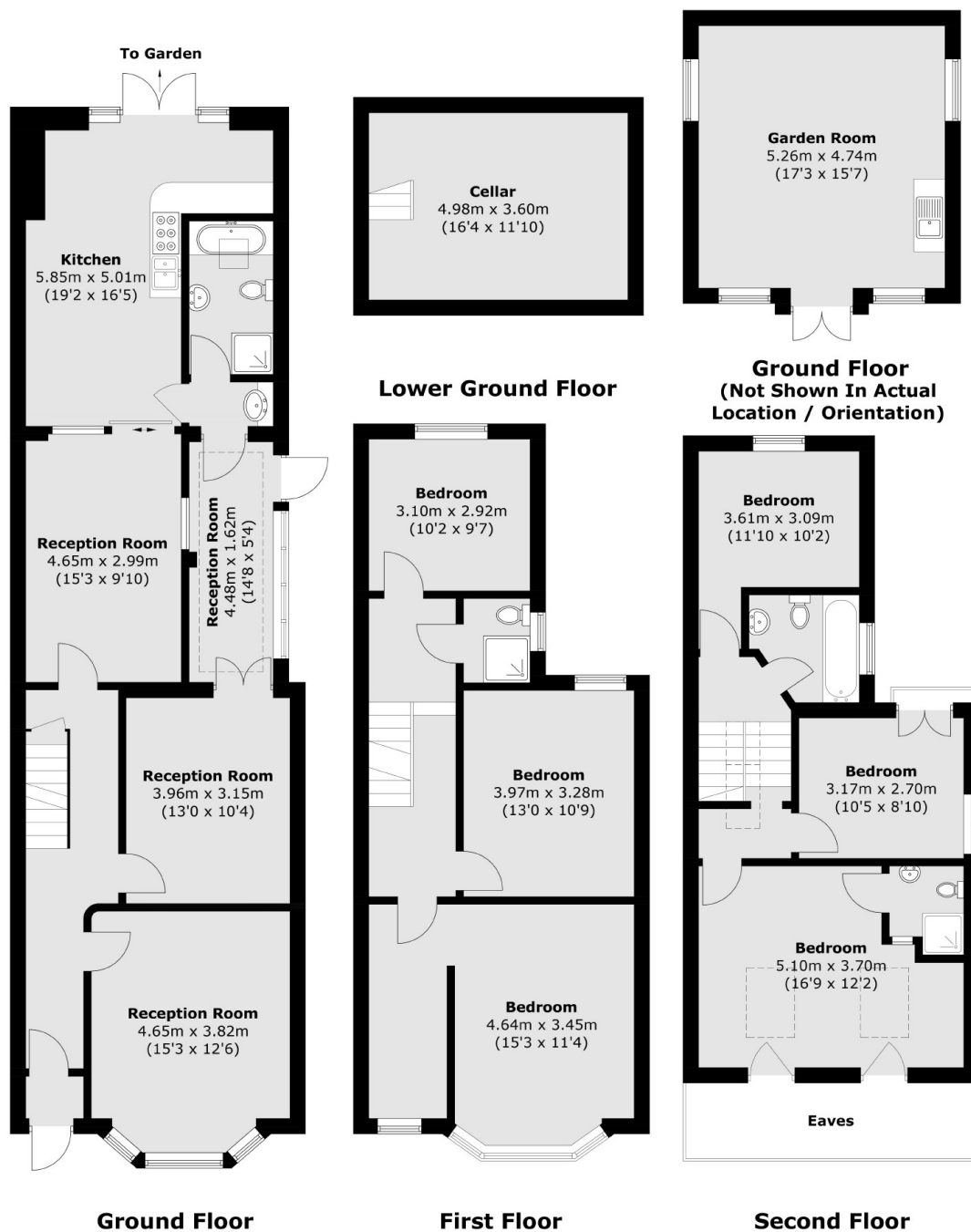
Haydon Park Road, SW19

The ground floor has a large entrance hallway which leads to three reception rooms and a generously proportioned kitchen/breakfast room with double doors leading to the rear garden. There is also a bathroom on the ground floor with walk-in shower and bath, as well as a utility room

The first floor accommodation provides from three double bedrooms, separate shower room and also provides access to the second floor with a further three double bedrooms and family bathroom. The property further benefits from a generous south facing garden with hard standing patio and lawned area, as well as a summerhouse to the rear. There is also off street parking for two cars.



Haydon Park Road, London, SW19



Total area (approx.): 222.6 sq. m (2396.0 sq. ft)
Garden Room: 24.4 sq. m (262.6 sq. ft)
(Including Cellar / Excluding Eaves)

Dexters

Wimbledon
12 The Broadway
London
SW19 1RF
Sales
020 8545 8580

Energy Rating: C. We aim to make our particulars both accurate and reliable. However they are not guaranteed; nor do they form part of an offer or contract. If you require clarification on any points then please contact us, especially if you're traveling some distance to view. Please note that appliances and heating systems have not been tested and therefore no warranties can be given as to their good working order.

RICS Regulated
Estate Agent
and Letting Agent

dexters.co.uk