



Kingston Road, SW19

£550,000

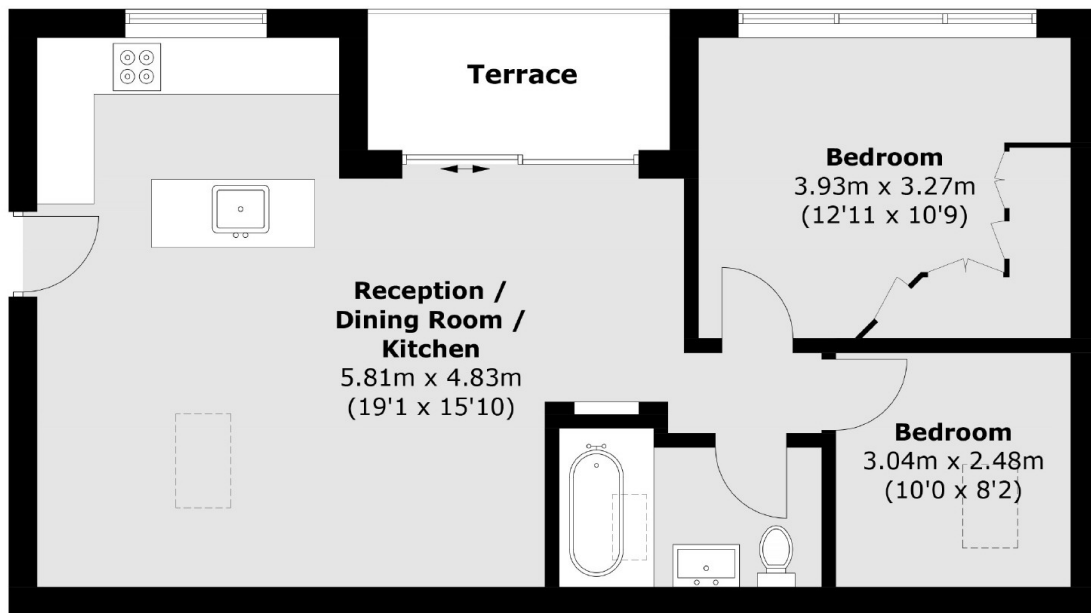
A two double bedroom first floor apartment, built four years ago. The apartment is part of a bespoke development, gated, centrally located and offering breathtaking ceiling heights.

Conveniently situated close to Wimbledon Town Centre, just moments away from Wimbledon Tube and Overground Station and a great range of restaurants and bars.

Features

- Two Double Bedrooms
- Exceptional High Ceilings
- Private Terrace
- New Build Guarantee
- Gated And Private
- Centrally Located

Kingston Road, London, SW19



Total area (approx.): 58.2 sq. m (626.4 sq. ft)
Terrace: 4.5 sq. m (48.4 sq. ft)

Dexters

Wimbledon
12 The Broadway
London
SW19 1RF
Sales
020 8545 8580

Energy Rating: B. We aim to make our particulars both accurate and reliable. However they are not guaranteed; nor do they form part of an offer or contract. If you require clarification on any points then please contact us, especially if you're traveling some distance to view. Please note that appliances and heating systems have not been tested and therefore no warranties can be given as to their good working order.

 **RICS** | Regulated
Estate Agent
and Letting Agent

[dexters.co.uk](https://www.dexters.co.uk)