



Ashridge Way, SM4
£850,000

Dexters



Ashridge Way, SM4

The quintessential family-home project. Large garden, off street parking, four bedrooms, with the potential to further extend in to the loft and rear, with beautiful external wisteria.

The house is semi detached, encompassing an integral garage and offers four bedrooms and a large family bathroom, over just two floors. There is extension potential in to the loft to construct a further two bedrooms and a bathroom, or a large master suite with walk in wardrobe.

The ground floor has a double through reception room to the front, with a separate kitchen at the back of the house. The house has a huge amount of potential to extend to the rear, with the ability to potentially offer another six meters of house.

The garden is measured in the region of one hundred feet and faces west, laid to lawn and with a large patio area, pond and grape vines covering the garden canopy. There is off street parking at the front of the house for two cars.

Ashridge Way is a fantastic residential street located close to a number of local stations with quick access into London. As well as green open spaces including Cannon Hill Common which is very nearby.

Features

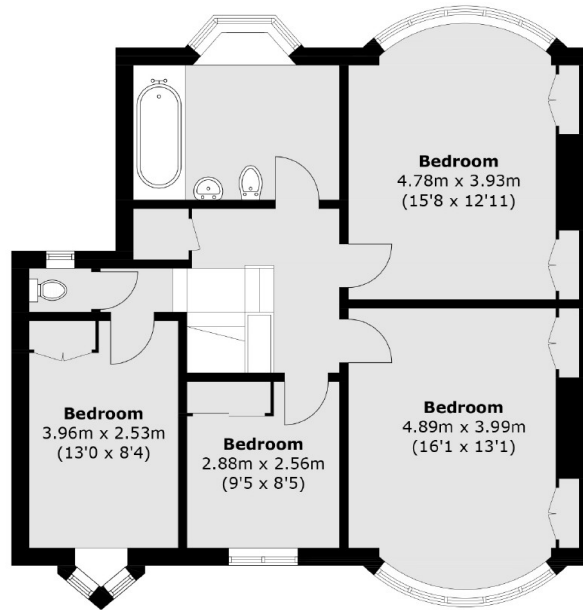
- Four Double Bedrooms
- Large 100 Foot Garden
- Off Street Parking
- Garage
- Vast Extension Potential
- Quiet Tree Lined Road



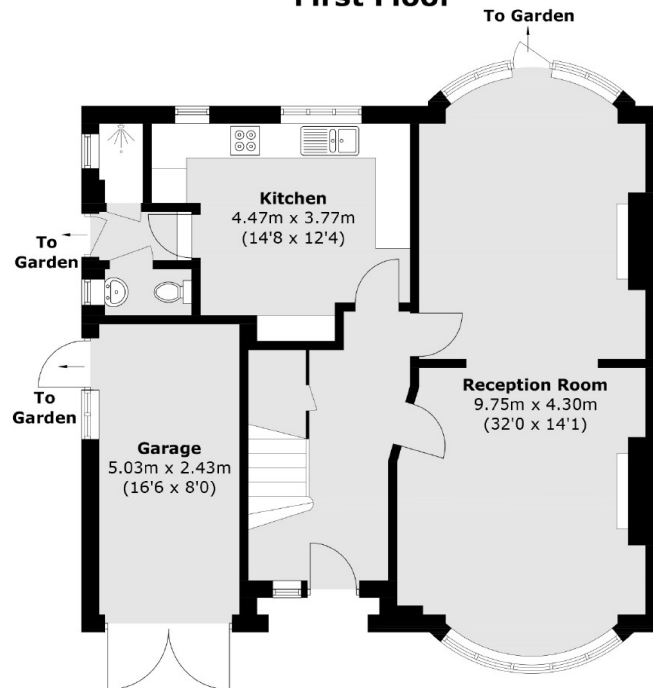




Ashridge Way, Morden, SM4



First Floor



Ground Floor

Approx Internal Area: 145.6 sq. m (1,567.3 sq. ft)

Garage: 12.7 sq. m (136.7 sq. ft)

Total: 158.3 sq. m (1,704 sq. ft)

Dexters

Wimbledon
12 The Broadway
London
SW19 1RF

Sales
020 8545 8580

Energy Rating: D. We aim to make our particulars both accurate and reliable. However they are not guaranteed; nor do they form part of an offer or contract. If you require clarification on any points then please contact us, especially if you're traveling some distance to view. Please note that appliances and heating systems have not been tested and therefore no warranties can be given as to their good working order.

 **RICS** | Regulated
Estate Agent
and Letting Agent

dexters.co.uk