



Hartfield Crescent, SW19

£795,000

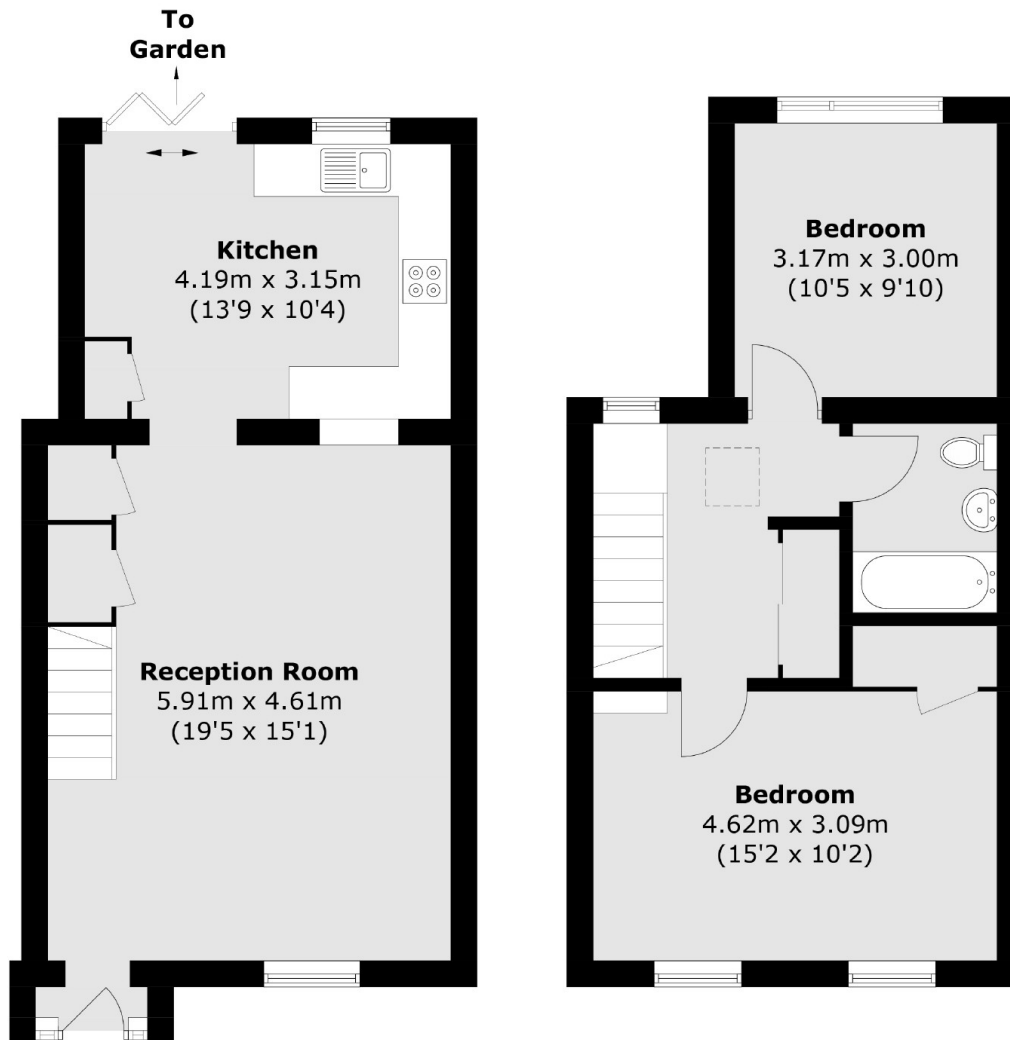
A two double bedroom end of terrace Victorian house, located in the centre of Wimbledon Town. The property has a private rear garden and an off street parking space to the rear.

Extremely close to Wimbledon station, offering frequent South West and District Line services. Hartfield Crescent is a quiet residential road, tucked just off of Wimbledon town centre with its wide range of bars, shops and restaurants.

Features

- Two Double Bedrooms
- End Of Terrace
- Central Wimbledon Location
- Off Street Parking
- Victorian
- No Onward Chain

Hartfield Crescent, London, SW19



Ground Floor

First Floor

Total area (approx.): 81.6 sq. m (878.3 sq. ft)