



Kingston Road, SW19

£415,000

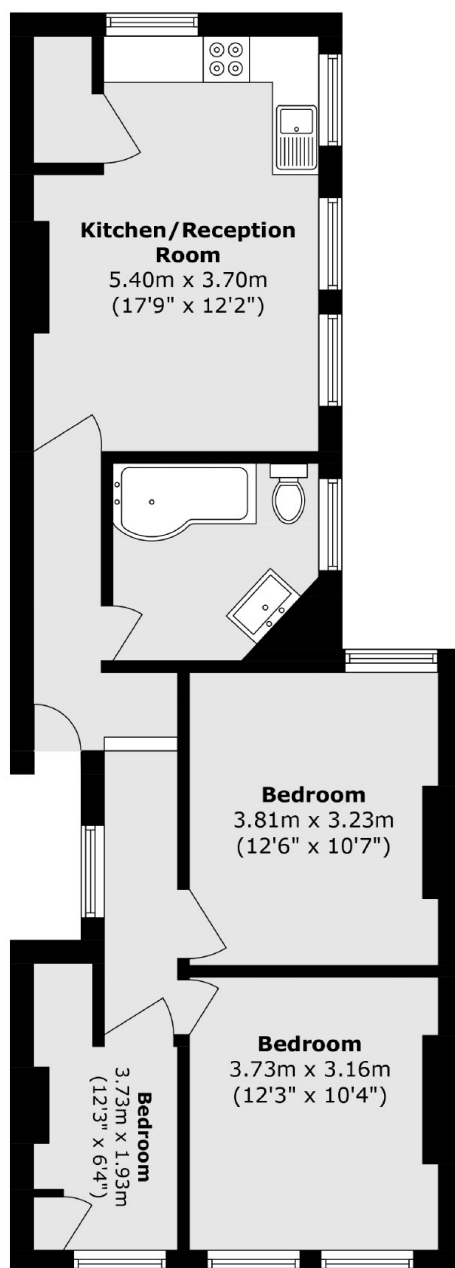
A three bedroom top floor Victorian apartment, measured at over 725 square feet and being sold with no onward chain. There is an open kitchen/ dining room, with the northern line just a short distance away.

Located close to Wimbledon Town Centre. You are just moments away from superb transport links such as the district line tube, Wimbledon Overground Station, Tramlink, and an eclectic range of restaurants and bars

Features

- Three Bedrooms
- Victorian Conversion
- Northern Line Nearby
- Open Kitchen/ Dining
- Top Floor

Kingston Road, London, SW19



Total area (approx.): 67.4 sq. m (725.4 sq. ft)