



Worple Road, SW20

£349,950

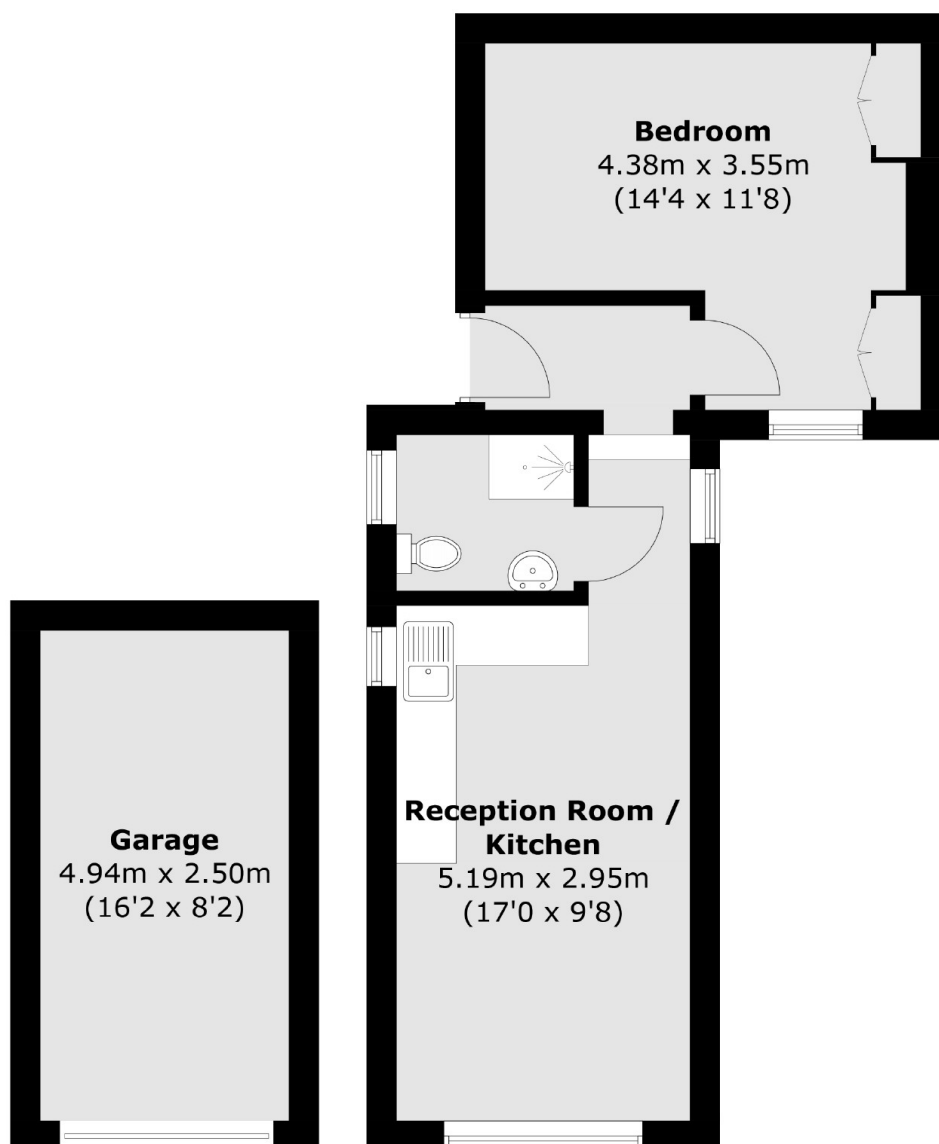
A first floor, one double bedroom Victorian conversion apartment. The property has a communal garden, a share of freehold and a garage located to the rear.

Located just a short distance from central Wimbledon with the district line tube, overground train and tram line, as well as exclusive shops, restaurants, pubs and bars.

Features

- Garage In Block
- Communal Gardens
- No Onward Chain
- Share Of Freehold
- Victorian Conversion
- Modern Throughout

Worple Road, London, SW20



Ground Floor
(Not Shown In Actual
Location / Orientation)

Second Floor

Total area (approx.) : 37.2 sq. m (400.4 sq. ft)
Garage : 12.3 sq. m (132.4 sq. ft)

Dexters

Wimbledon
12 The Broadway
London
SW19 1RF
Sales
020 8545 8580

Energy Rating: D. We aim to make our particulars both accurate and reliable. However they are not guaranteed; nor do they form part of an offer or contract. If you require clarification on any points then please contact us, especially if you're traveling some distance to view. Please note that appliances and heating systems have not been tested and therefore no warranties can be given as to their good working order.

 **RICS** | Regulated
Estate Agent
and Letting Agent

dexters.co.uk