



Spencer Hill, SW19

£2,500,000

Dexters



Spencer Hill, SW19

One of only a handful of bespoke, architecturally designed 1960's houses in London. This detached, five bedroom, three bathroom house, complete with off street parking for two cars and a garage, is a genuine one off.

The accommodation spans seven levels over four floors, with the ground floor housing a garage, kitchen and a large breakfast dining room, with doors opening to the large landscaped and wooded garden, measuring in excess of eighty feet.

The first floor has a large open reception room with floor to ceiling windows and double height ceilings, overlooking the garden. There is also a separate dining room. The floor leads up to a study with garden views and a large family bathroom.

The second floor houses four bedrooms and two bathrooms, with the third floor offering a large double bedroom and a roof terrace. In addition, the two off street parking spaces and detached element offer features that are near impossible to achieve for this value nearby.

Located on Spencer Hill, one of Wimbledon's most highly regarded roads, close to Wimbledon Village and Common, Ursuline and Donhead Prep Schools, as well as the town centre with overground and District Line, restaurants and bars.

Features

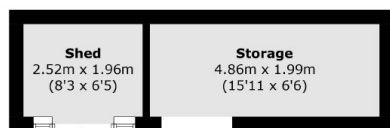
- Detached
- Five Bedrooms
- Off Street Parking
- Garage
- Eighty Foot Garden
- Over 207 Square Meters



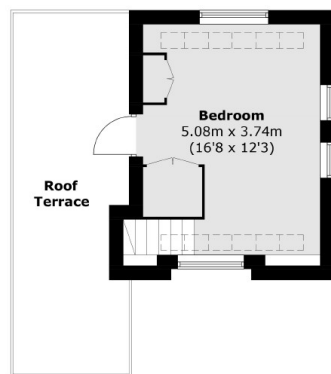




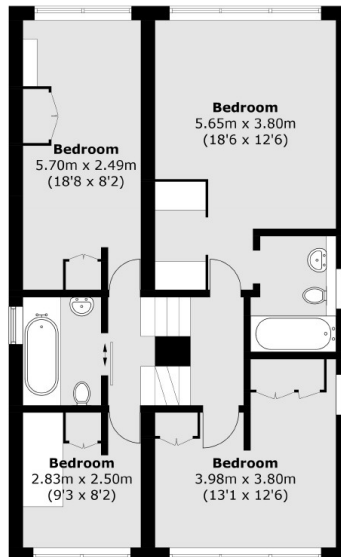
Spencer Hill, London, SW19



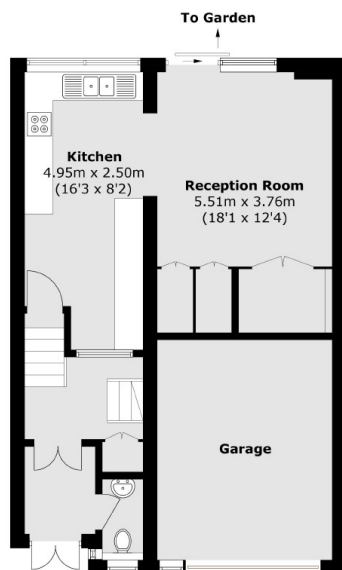
(Not Shown In Actual Location / Orientation)



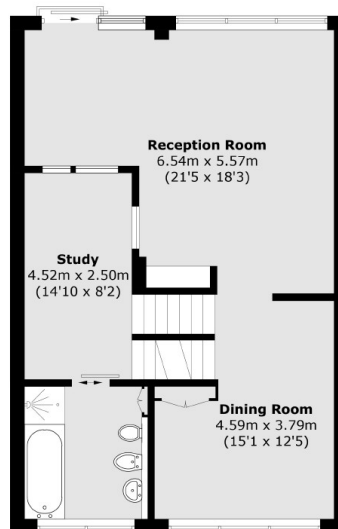
Third Floor



Second Floor



Ground Floor



First Floor

Total area (approx.): 207.5 sq. m (2,233.4 sq. ft)

Garage: 17.1 sq. m (184.1 sq. ft)

Outbuilding: 14.9 sq. m (160.4 sq. ft)

Roof Terrace: 18.0 sq. m (193.7 sq. ft)

Dexters

Wimbledon
12 The Broadway
London
SW19 1RF

Sales
020 8545 8580

Energy Rating: . We aim to make our particulars both accurate and reliable. However they are not guaranteed; nor do they form part of an offer or contract. If you require clarification on any points then please contact us, especially if you're traveling some distance to view. Please note that appliances and heating systems have not been tested and therefore no warranties can be given as to their good working order.



dexters.co.uk