



Cowdrey Road, SW19

£795,000

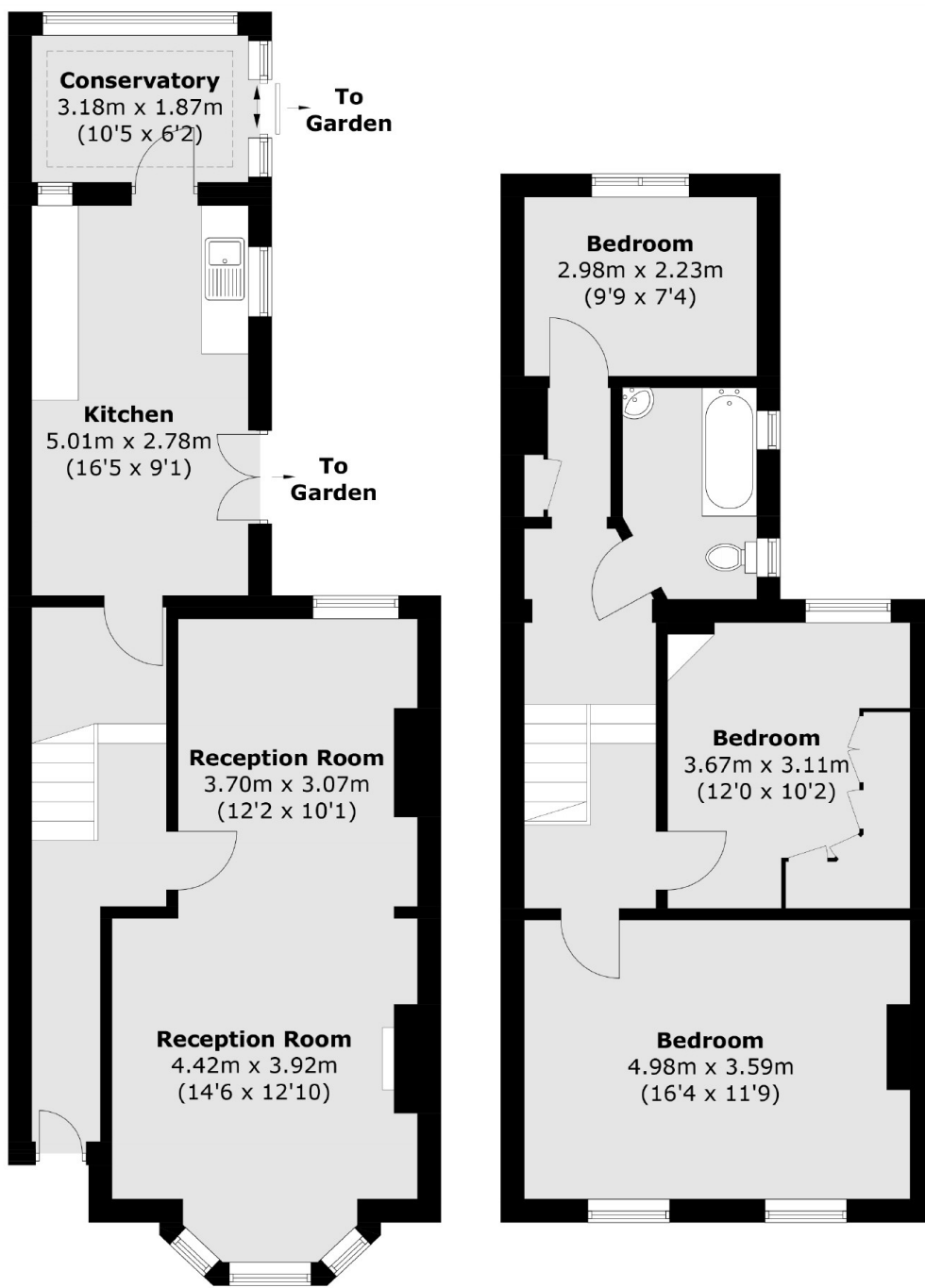
A three bedroom Victorian terraced house, located in a quiet cul de sac. The property has the potential to extend in to the loft and to the rear, with a south facing garden.

Cowdrey Road is a quiet cul de sac, just around the corner from South Park Gardens and close to the park. There are superb transport links on your doorstep including Haydons Road Station, taking you to London Blackfriars and Farringdon.

Features

- Three Bedrooms
- Quiet Cul De Sac
- Victorian Terraced House
- Extension Potential
- Over 1200 Square Feet
- South Facing Garden

Cowdrey Road, London, SW19



Ground Floor

First Floor

Total area (approx.): 112.0 sq. m (1,205.5 sq. ft)