

Queens Road, SW19

£599,950

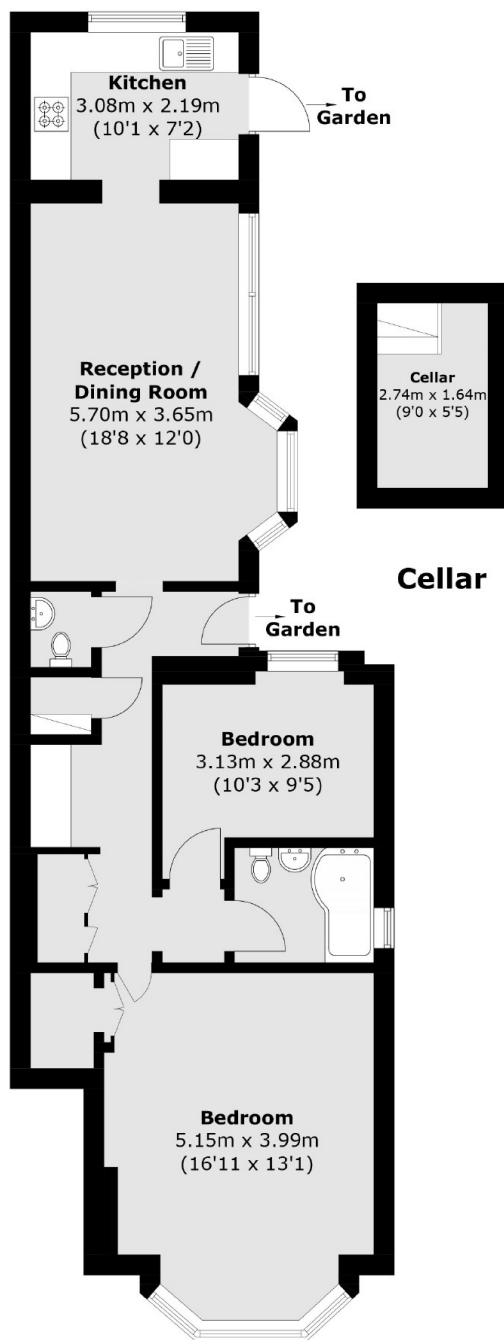
An exceptionally well presented, two double bedroom ground floor Victorian conversion. The apartment has a large private garden, a freehold share and is sold with no onward chain

Located on the edge of South Park Gardens, with nearby transport links to London from the District Line in Wimbledon town centre and Northern Line just a little further away. Vibrant bars and restaurants, are just down the road.

Features

- Two Double Bedrooms
- Victorian Conversion
- Share of Freehold
- Ground Floor
- Private Garden
- No Onward Chain

Queens Road, London, SW19



Ground Floor

Total area (approx.): 77.9 sq. m (838.5 sq. ft)