



Pelham Road, SW19

£575,000

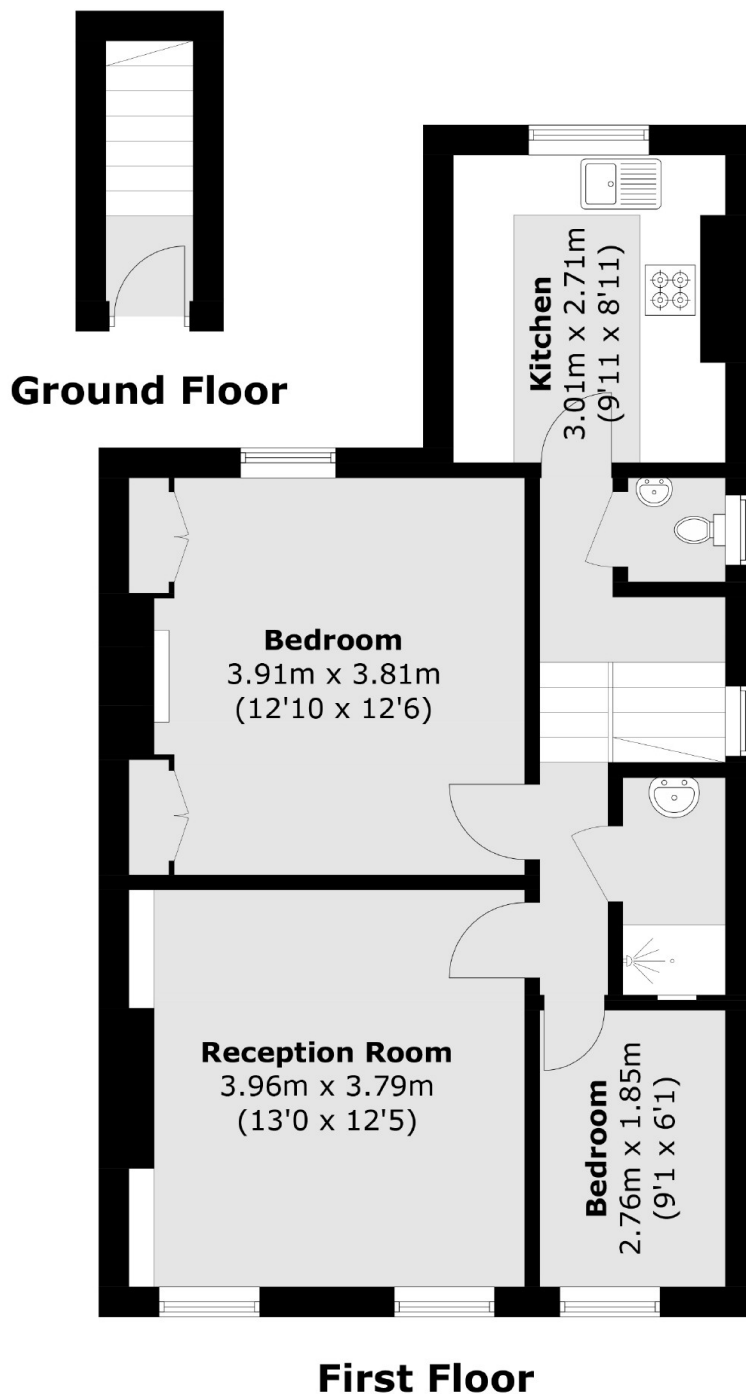
A charming top floor two bedroom Victorian conversion apartment located on a beautiful leafy street. The property has been refurbished by its current owners and is complete with a private south facing garden and a share of freehold.

Pelham Road is just a short walk to South Wimbledon tube station and close to the numerous amenities of vibrant central Wimbledon, alongside the district line, bus routes, tramlink and an eclectic range of bars and restaurants.

Features

- Victorian Conversion
- Period Features
- Share of Freehold
- High Ceilings
- Private South Facing Garden
- Ministers Location

Pelham Road, London, SW19



Total area (approx.): 59.1 sq. m (636.1 sq. ft)