



## Westcoombe Avenue, SW20

£2,500 Per calendar month

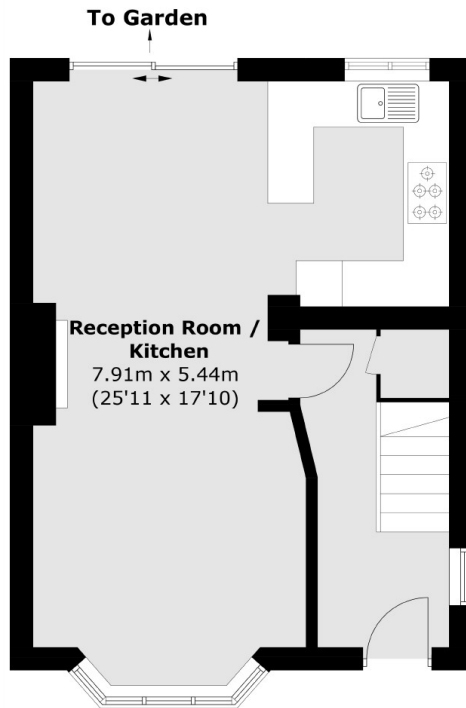
A three bedroom, one bathroom house with a open plan living room, dining space and kitchen on the ground floor that opens to a private garden through a sliding door.

Westcoombe Avenue is a cul-de-sac a short distance from Raynes Park Recreational Ground, Goals football centre and all of the local amenities of Raynes Park including Waitrose supermarket.

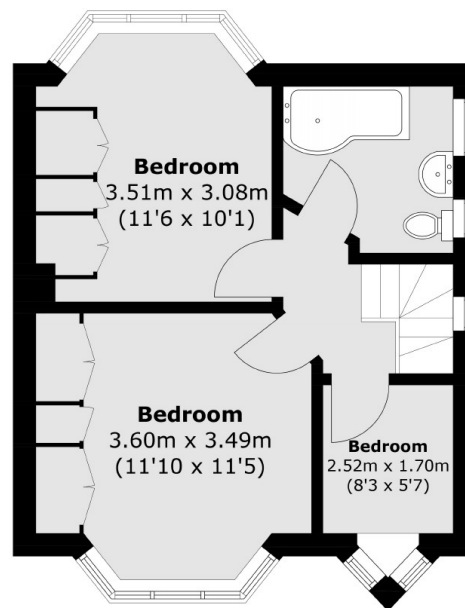
### Features

- Three Bedrooms
- One Bathroom
- House
- Garden
- Cul-de-sac
- Semi-detached

# Westcoombe Avenue, London, SW20



**Ground Floor**



**First Floor**

Total area (approx.): 76.5 sq. m (823.4 sq. ft)