



Darlaston Road, SW19

£425,000

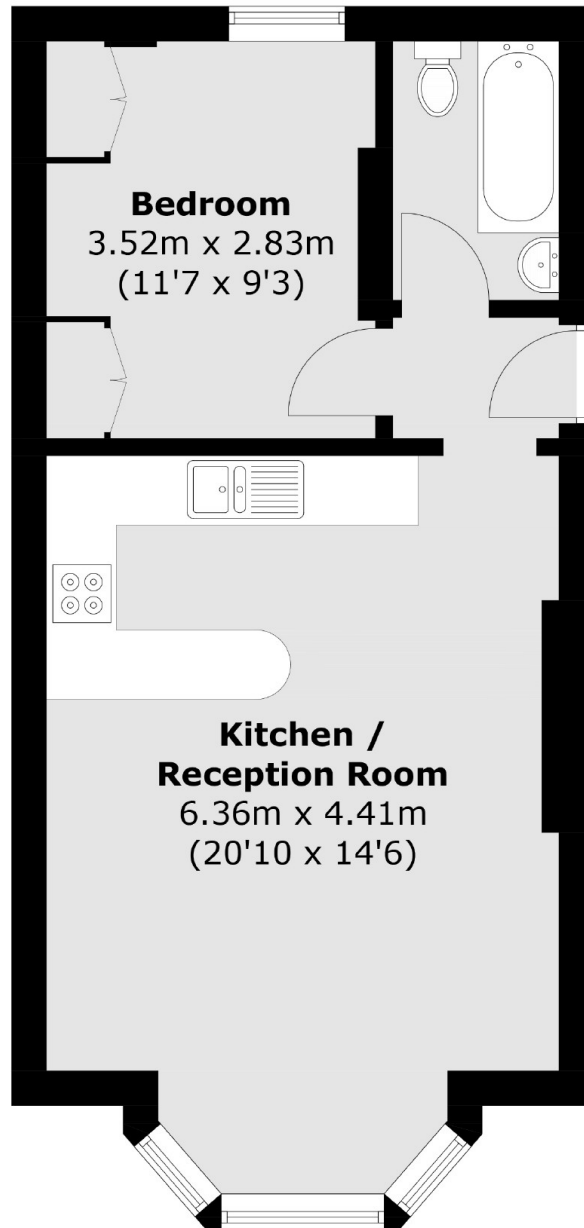
A ground floor, one bedroom Victorian conversion, located on a quiet, desirable street. With communal gardens, a garage and a freehold share, this would make the perfect first purchase or investment.

Darlaston Road is certainly one of Wimbledon's most highly regarded roads with the village and the common nearby. District line, National Rail and Tramlink are within walking distance, as well as churches, library, banks, gyms, supermarkets, restaurants, bars and shops.

Features

- One Double Bedroom
- Garage
- Communal Gardens
- Share Of Freehold
- Detached Victorian Building
- No Forward Chain

Darlaston Road, London, SW19



Total area (approx.): 41.5 sq. m (446.7 sq. ft)