



Rutlish Road, SW19

£775,000

Dexters



Rutlish Road, SW19

An exceptionally well presented, two double bedroom, detached house located within a quiet cul-de-sac in Old Merton Park. The property has a south west facing wrap-around garden and further benefits from off street parking.

The ground floor of the property offers an entrance hallway providing access to the generously proportioned front reception room, fully fitted modern kitchen, alongside a w/c .

The first floor has two large double bedrooms with a mixture of built in wardrobes and eaves storage, and a family bathroom.

The whole house has an incredibly spacious, well lit and luxurious feel, being semi-detached and with manicured gardens, this is an ideal purchase for any family and also offers a huge amount of potential to extend the side and in to the loft.

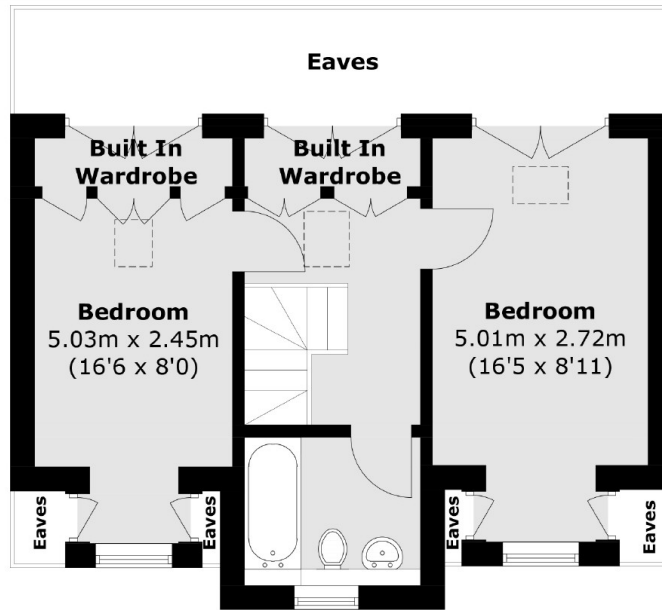
Rutlish Road is in the renowned Australias', conveniently situated close to Wimbledon Town Centre. Moments away from the northern and district line tube, mainline, tram line and outstanding local schools.

Features

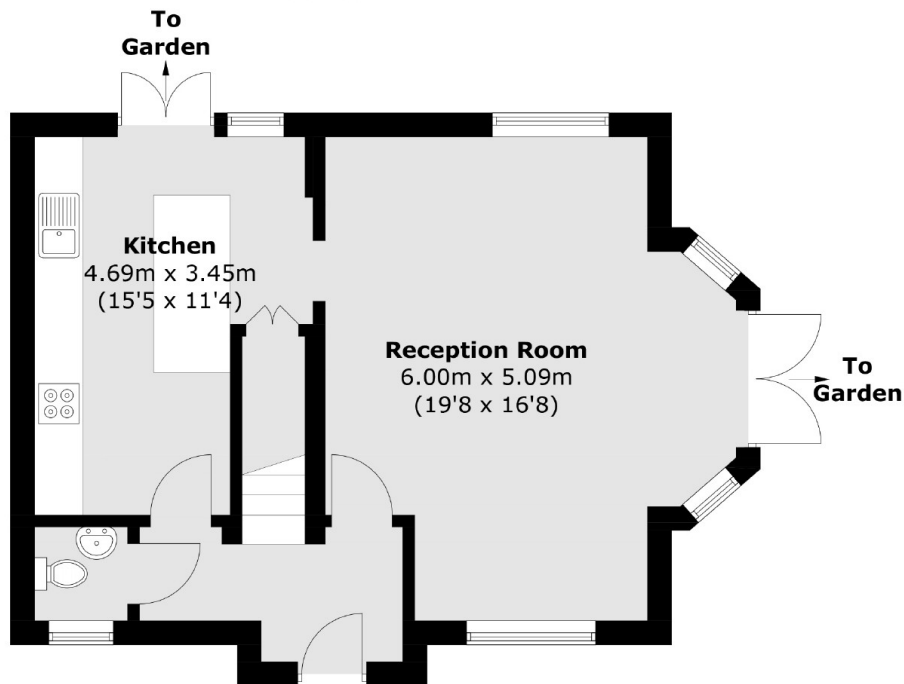
- Two Double Bedrooms
- Wrap-Around Garden
- Off Street Parking
- Near 1000 Square Feet
- Modern Luxury Kitchen
- Detached House



Rutlish Road, London, SW19



First Floor



Ground Floor

Total area (approx.): 87.6 sq. m (942.9 sq. ft)
(Excluding Eaves)