



Chambers Park Hill, SW20

£1,475,000

Dexters



Chambers Park Hill, SW20

An incredible three double bedroom, three bathroom apartment with arguably some of the best views within the development. There is underground parking, incredible communal areas and no onward chain.

The communal areas include, visitors parking, allocated underground parking for the flat, manicured communal gardens, a concierge service, meeting rooms that are available for hire, a cinema, library and well equipped gym. The property is also offered with no onward chain.

The property comprises an elegant reception room with wooden flooring and is flooded with natural light. The reception room has double doors which open on to a decked, south facing terrace, perfect for dining and relaxing.

The principal bedroom suite benefits from dressing area and a generous en suite bathroom. There are two further double bedrooms, one of which with en suite shower room and a separate family bathroom.

Wimbledon Common and Village are within walking distance offering an array of designer shops, boutiques, historic pubs, restaurants and green open spaces. The area has some highly regarded and sought after local and independent schools.

Features

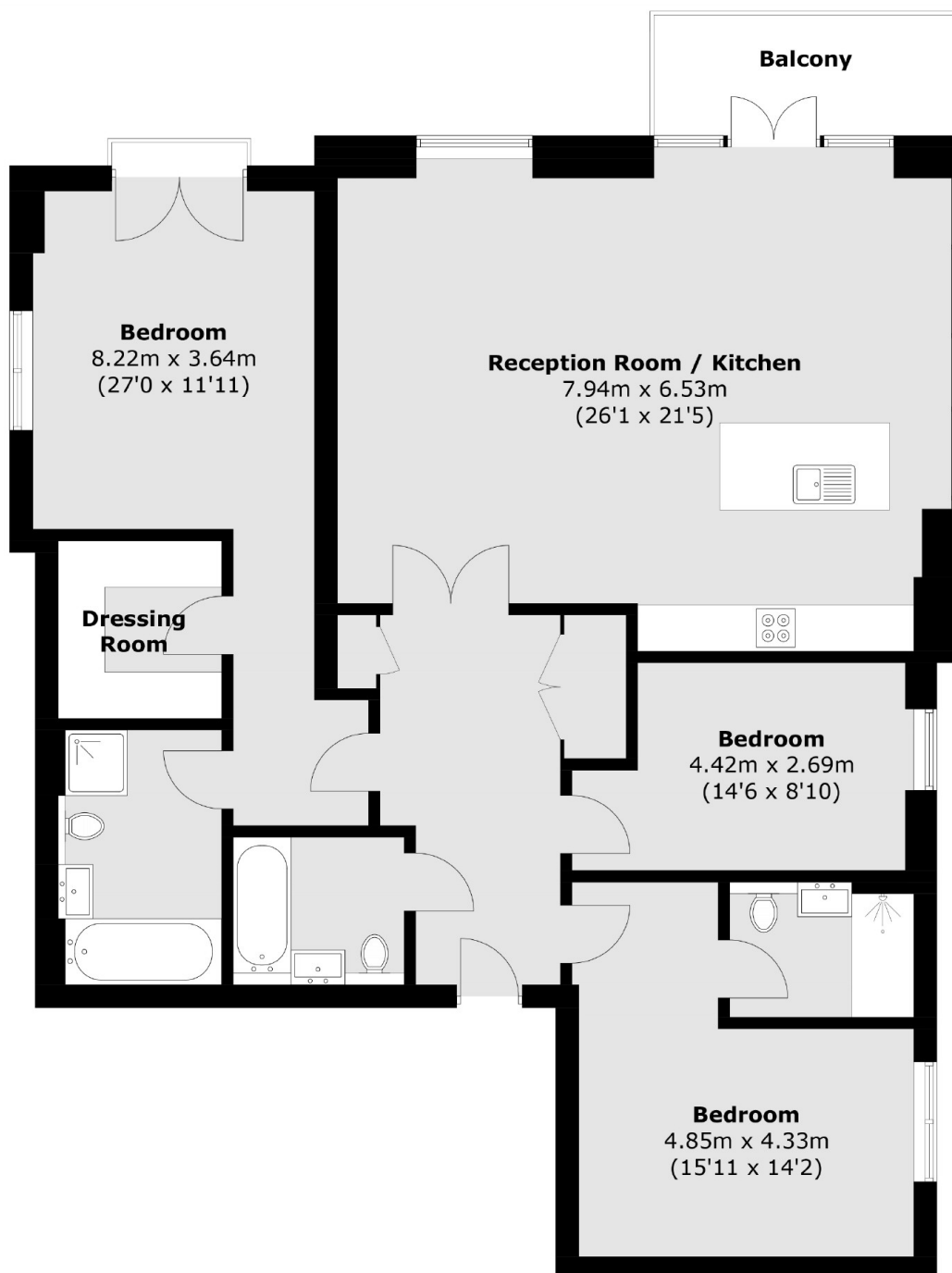
- Three Double Bedrooms
- Three Bathrooms
- Private Balcony
- Underground Parking
- Exceptional Communal Areas
- No Onward Chain







Chambers Park Hill, London, SW20



Total area (approx.): 135.9 sq. m (1,462.8 sq. ft)
Balcony area: 6.2 sq. m (66.7 sq. ft)