



Chambers Park Hill, SW20

£1,525,000

Dexters



Chambers Park Hill, SW20

An incredible three double bedroom, three bathroom apartment with arguably some of the best views within the development. There is underground parking, incredible communal areas and no onward chain.

Wimbledon Common and Village are within walking distance offering an array of designer shops, boutiques, historic pubs, restaurants and green open spaces. The area has some highly regarded and sought after local and independent schools.

Features

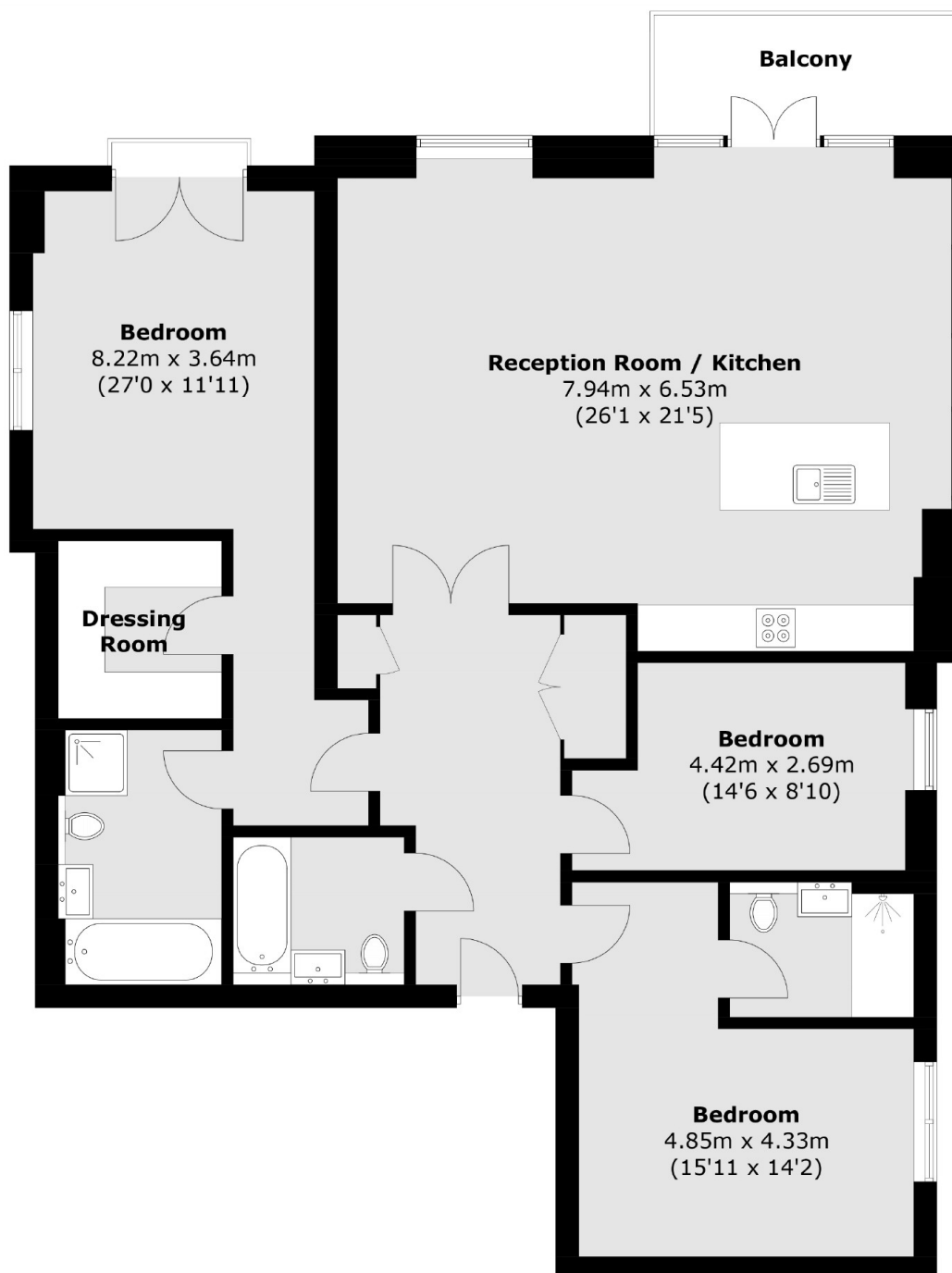
- Three Double Bedrooms
- Three Bathrooms
- Private Balcony
- Underground Parking
- Exceptional Communal Areas
- No Onward Chain







Chambers Park Hill, London, SW20



Total area (approx.): 135.9 sq. m (1,462.8 sq. ft)
Balcony area: 6.2 sq. m (66.7 sq. ft)