



## Kohat Road, SW19

£325,000

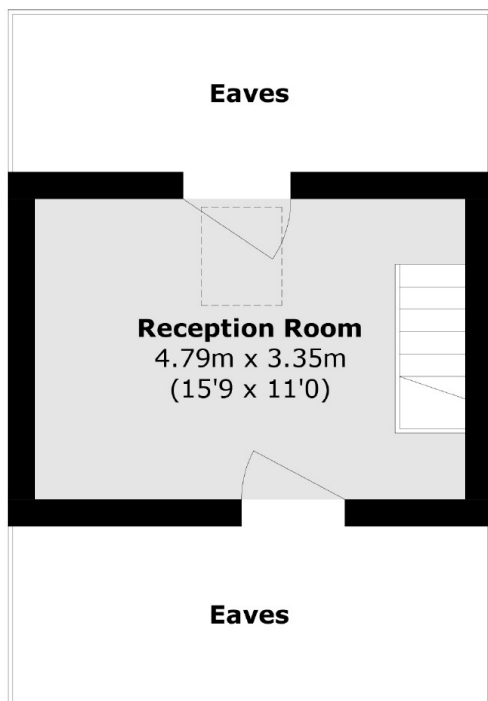
A one double bedroom, first floor Victorian conversion. The property has a semi open plan kitchen/ reception room, a loft room that is set up with a secure set of stairs, loft conversion potential and no onward chain.

Kohat Road is a popular residential road, set close to the Thames Link with frequent trains to London. Wimbledon Broadway is nearby offering the District Line, alongside a vast array of restaurants, and premium shopping.

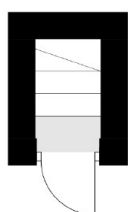
### Features

- Victorian Conversion
- Freehold Ownership
- Loft Room
- Loft Conversion Potential
- Quiet Tree Lined Street
- No Onward Chain

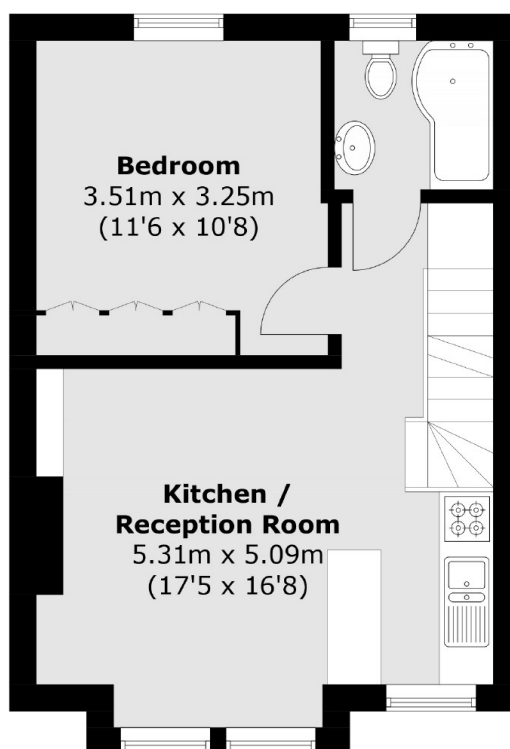
# Kohat Road, London, SW19



## Second Floor



## Ground Floor



## First Floor

Total area (approx.): 54.6 sq. m (587.7 sq. ft)  
(Excluding Eaves)