



Craven Gardens, SW19

£875,000

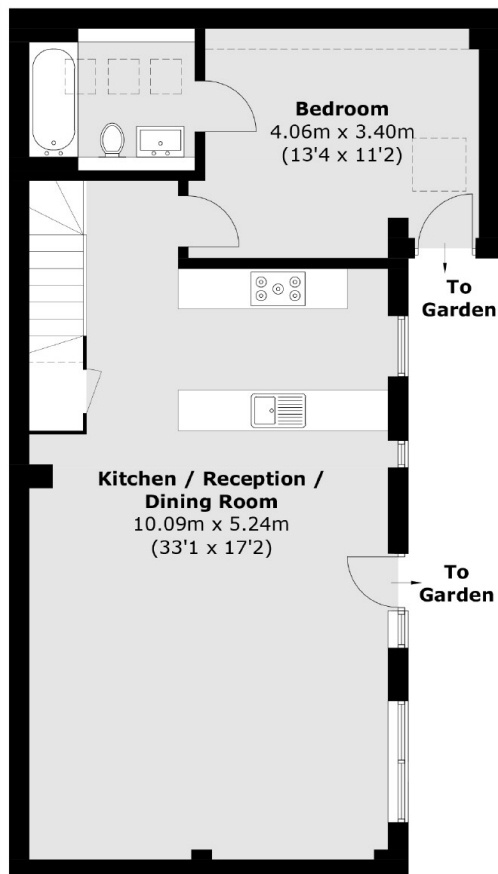
A complete one off for the area, a three bedroom, three bathroom house, located just beside South Park Gardens. The property has its own private garden and is sold with no onward chain.

Located on a quiet street, this family orientated location is close to highly sought after schools, a fantastic selection of High Street brand shops, restaurants and great transport links.

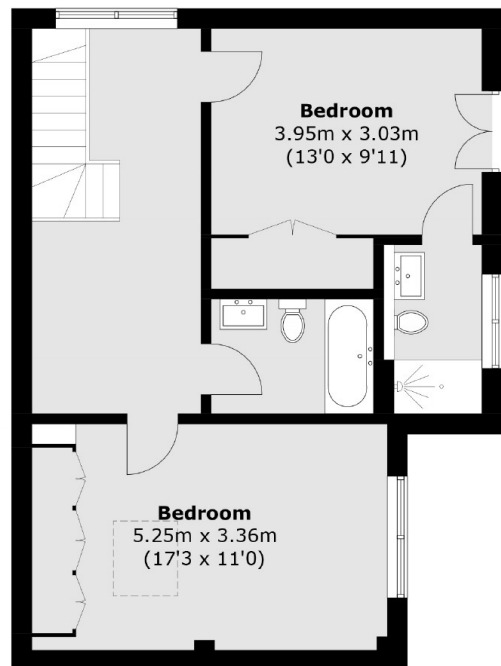
Features

- Three Bedrooms
- Three Bathrooms
- No Onward Chain
- Private Garden
- Two Floor Lateral House
- Near 1400 Square Feet

Craven Gardens, London, SW19



Ground Floor



First Floor

Total area (approx.): 126.3 sq. m (1359.5 sq. ft)