



Hamilton Road, SW19

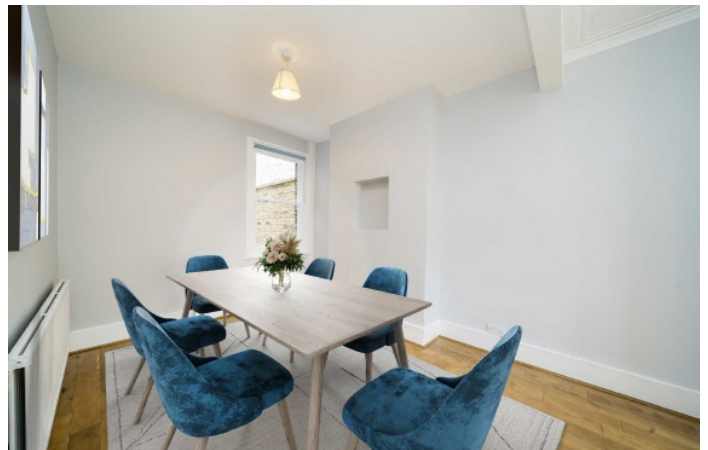
£1,200,000

A substantial Victorian terraced house, extended to the rear and loft to offer five bedrooms and two bathrooms. The property has a generous west facing garden and is offered with no forward chain.

Hamilton Road is in the desirable 'Battles' area within Wimbledon. Near the northern line, superb schools, a selection of shops, bars, restaurants, theatres, parks and a cinema. The area is vibrant and very popular.

Features

- Near 1500 Square Feet
- Five Bedrooms
- Two Bathrooms
- West Facing Garden
- Victorian Terrace House
- No Forward Chain



Hamilton Road, SW19

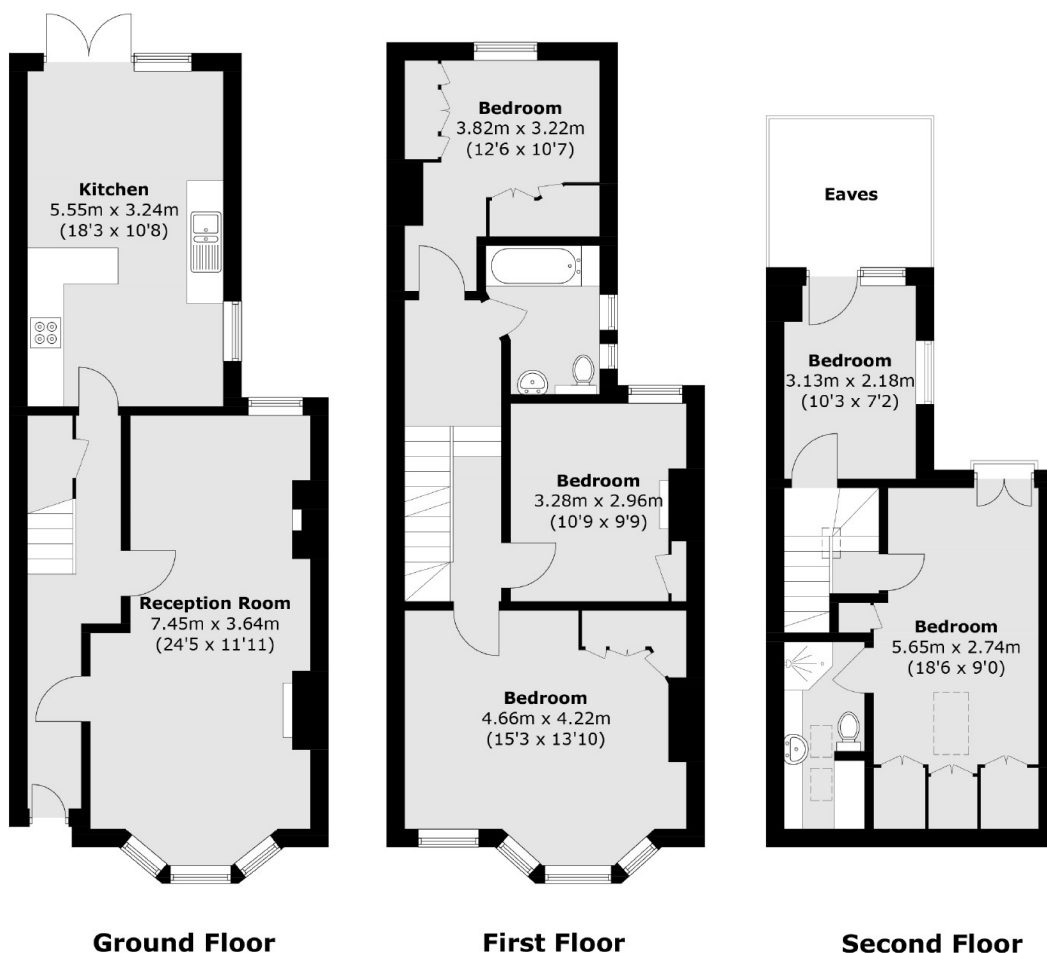
The ground floor has a large through reception room to the front, complete with a characterful fireplace and plantation shutters. To the rear, there is under-stairs storage, followed by an open kitchen dining room with french doors leading to the rear garden.

The first floor has three double bedrooms and a family bathroom, with the loft then converted to the full capacity to offer two further bedrooms, an en suite shower room and eaves storage.

To the rear of the property you have a large west facing garden with decking.



Hamilton Road, London, SW19



Total area (approx.): 135.2 sq. m (1,455.3 sq. ft)
(Excluding Eaves)