



## Kingston Road, SW20

£199,950

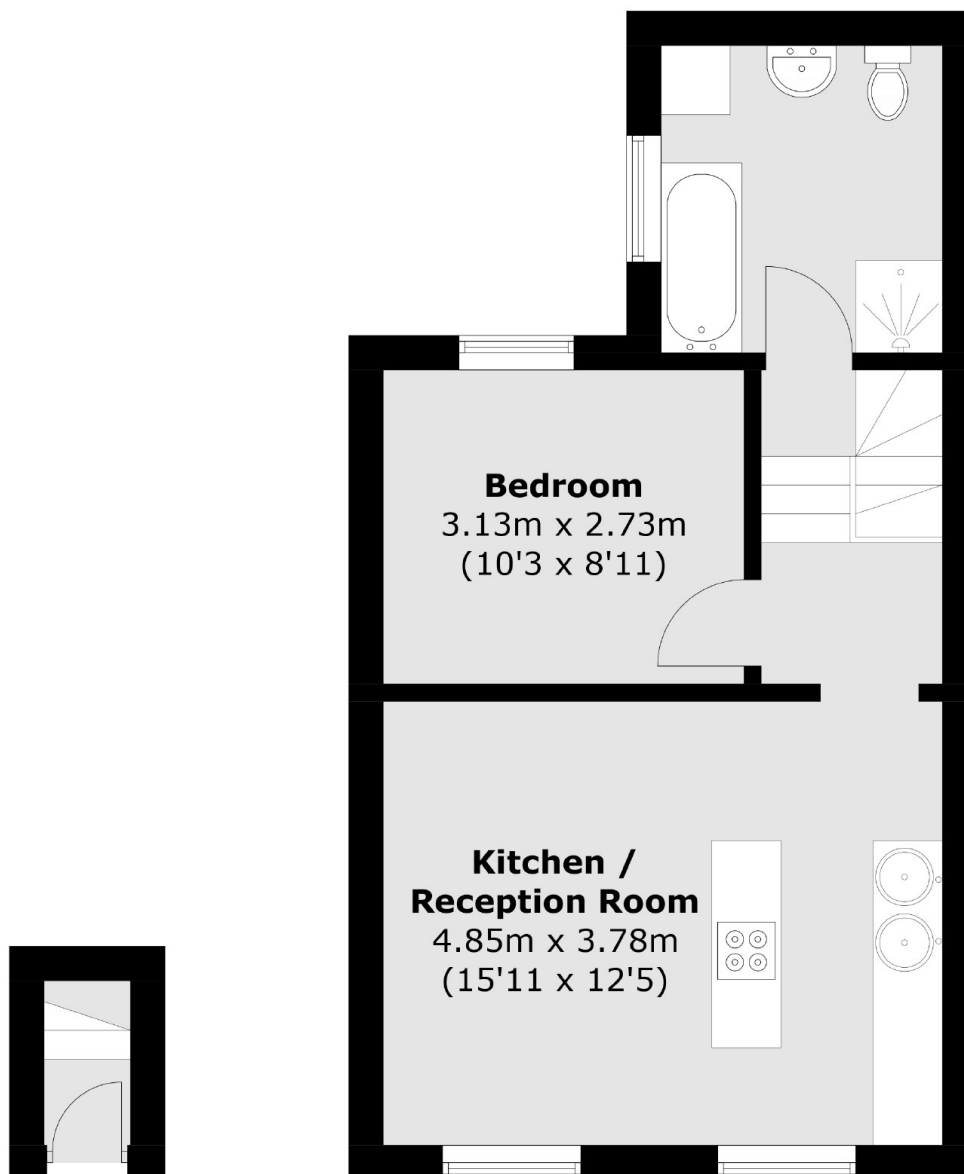
A one double bedroom, first floor Victorian conversion flat, located within close proximity to Raynes Park Station. The property has an open kitchen/ reception room and is sold with no onward chain.

Incredibly well placed for all of the local amenities of Raynes Park including Waitrose supermarket and is a short walk to Babylon, ideal for a leisurely brunch or hop on the train to London for a night out.

### Features

- One Double Bedroom
- Victorian Conversion
- First Floor
- Over 40 Square Meters
- No Onward Chain
- Close To The Station

# Kingston Road, London, SW20



**Ground Floor**

**First Floor**

Total area (approx.): 40.8 sq. m (439.1 sq. ft)