



Effra Road, SW19

£735,000

Arguably one of the most exceptionally renovated and extended garden flats in Wimbledon. There are two double bedrooms, bathroom with walk in shower and an open kitchen/ breakfast room and south facing garden.

Effra Road is nestled in the Highly regarded 'South Park Gardens' grid, offering quick access to Wimbledon Town Centre district line tube and Haydons Road thames link. There are also a number outstanding Primary Schools nearby.

Features

- Two Double Bedrooms
- Extended And Renovated
- South Park Gardens
- South Facing Garden
- Share Of Freehold
- No Onward Chain



Effra Road, SW19

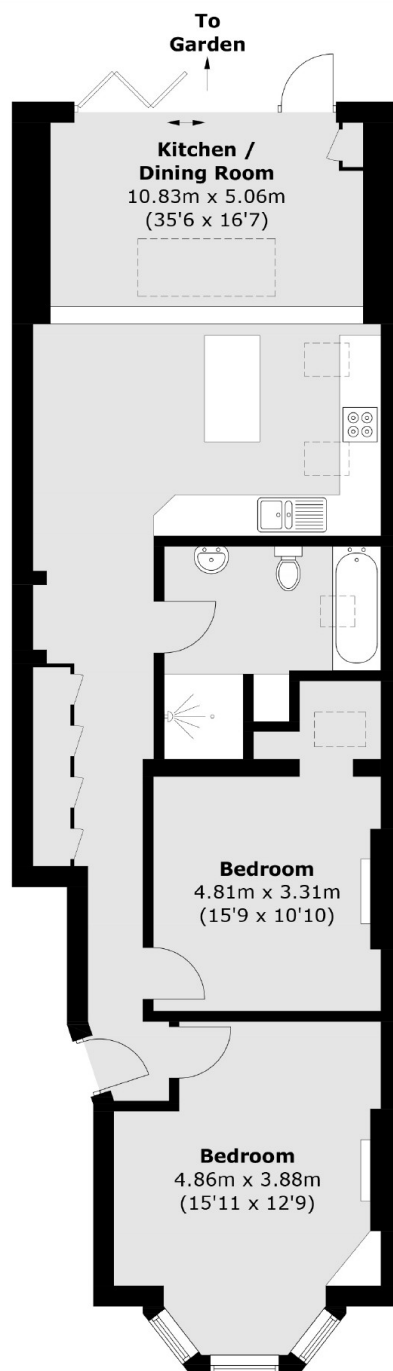
The apartment has been renovated recently, throughout, using some of the most luxurious materials. The master bedroom has a large bay window with shutters have been fitted, with a period working fireplace and high ceilings. There is another double bedroom beside with a walk in wardrobe.

The bathroom has underfloor heating has a Fired Earth bath, beneath a vaulted ceiling with sky lights and a large walk-in wet room style shower with rain effect. First impressions of this apartment are impressive, but the extended kitchen, dining and living room is utterly outstanding.

The kitchen has granite worktops, wine fridge, vaulted ceilings with skylights and a Smeg fridge. Stepping down you enter the reception area with huge bi-folding doors that, when opened, offer the perfect inside/ outside living that is so popular. The attention to details with the rear garden fully decked, and the Victorian tiles and sandstone paving to the front, completes the luxury feel.



Effra Road, London, SW19



Total area (approx.): 82.2 sq. m (884.8 sq. ft)