



Cannon Hill Lane, SW20

£2,500 Per calendar month

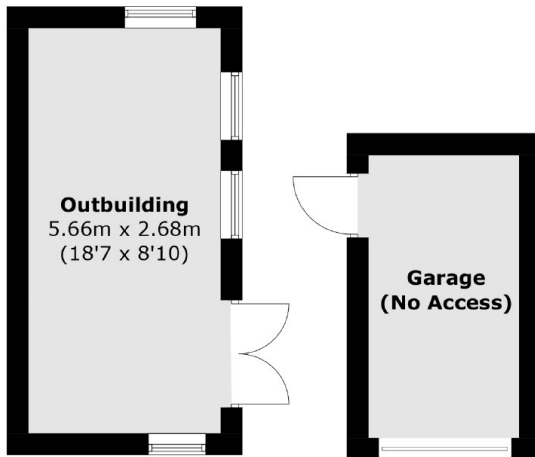
A three bedroom, one bathroom, semi-detached home, with two reception rooms on the ground floor, separate kitchen, large private garden with a Summer house and garage.

Cannon Hill Lane offers a short walk to Cannon Hill Common as well as the famous National Trust Morden Hall Park and allows easy access to the A3 and local bus services to Raynes Park and Wimbledon.

Features

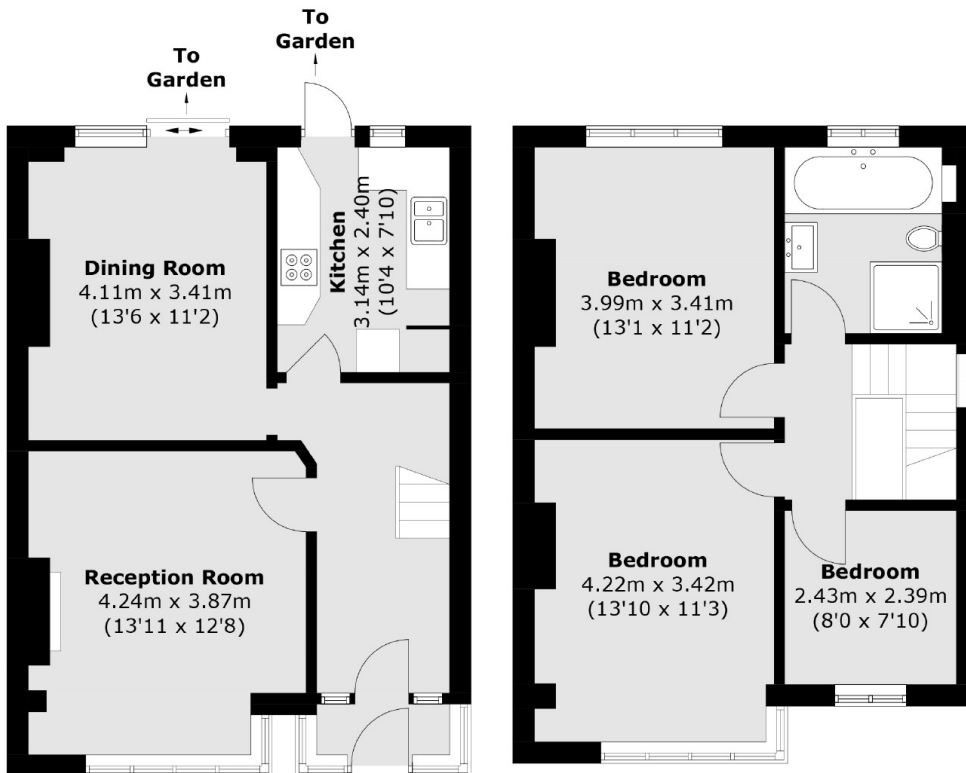
- Three Bedrooms
- Semi-Detached
- Garage
- Large Private Garden
- Wooden Floors
- Summer House

Cannon Hill Lane, London, SW20



(Not Shown In Actual
Location / Orientation)

(Not Shown In Actual
Location / Orientation)



Ground Floor

First Floor

Total area (approx.) : 96.1 sq. m (1,034.4 sq. ft)
Outbuilding (approx.) : 15.4 sq. m (165.8 sq. ft)
(Excluding Garage)