

Cowdrey Road, SW19

£425,000

A two double bedroom first floor Victorian conversion with full ownership of the loft allowing for future potential to extend and add value. An ideal first time buy or investment purchase, it's even offered with no onward chain as well as a share of the freehold.

Cowdrey Road is a quiet cul de sac, just around the corner from South Park Gardens and close to the park. There are superb transport links on your doorstep including Haydons Road Station, taking you to London Blackfriars and Farringdon.

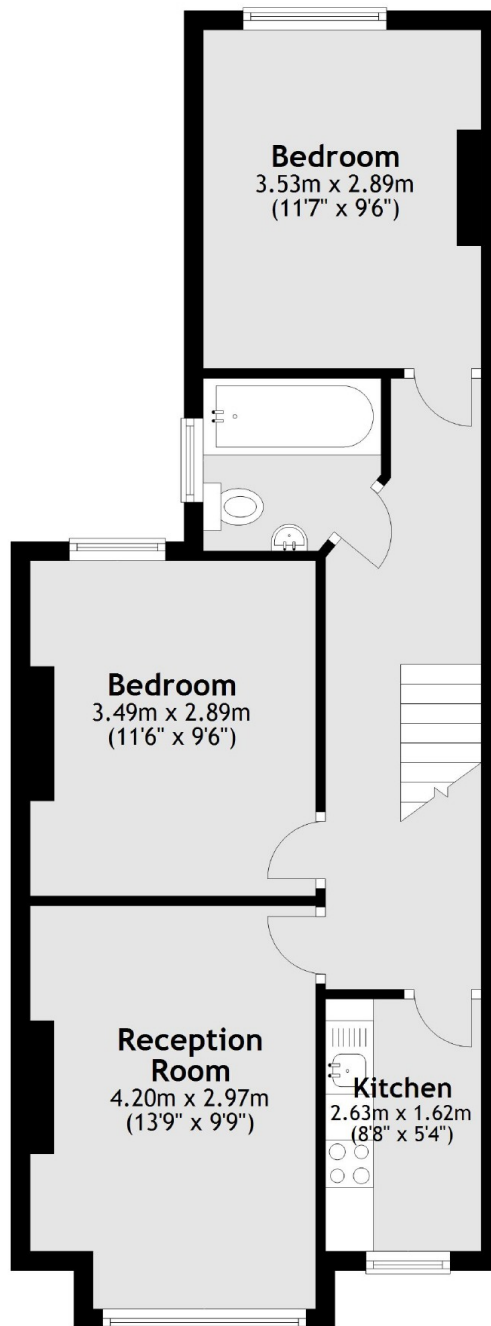
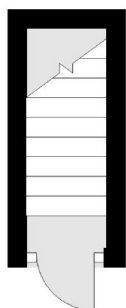
Features

Two Double Bedrooms
Victorian Period Conversion
Separate Kitchen
Share Of The Freehold
Future Potential To Extend
Near To Haydons Road Rec

Cowdrey Road, London, SW19

First Floor

Ground Floor



Total area: approx. 53.1 sq. metres (571.1 sq. feet)