



## Grove Road, SW19

£650,000

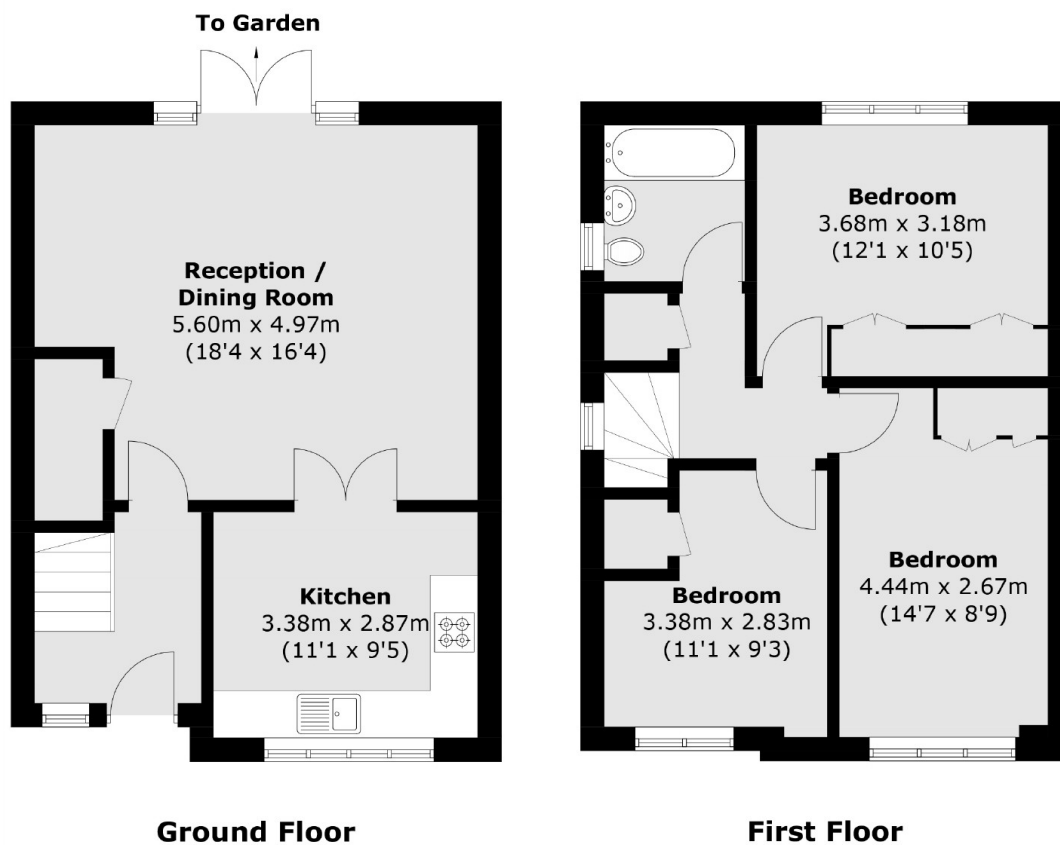
A three double bedroom detached house located in a quiet cul de sac. There is the added benefit of a west facing garden, extension potential and no onward chain.

Grove Road is a quiet cul de sac in an area with highly sought after schools and a fantastic selection of High Street brand shops, popular restaurants and excellent transport links.

### Features

- No Onward Chain
- Detached House
- Three Double Bedrooms
- West Facing Garden
- Quiet Residential Road
- Superb Transport Links

# Grove Road, London, SW19



Total area (approx.): 86.0 sq. m (925.7 sq. ft)