



East Road, SW19

£395,000

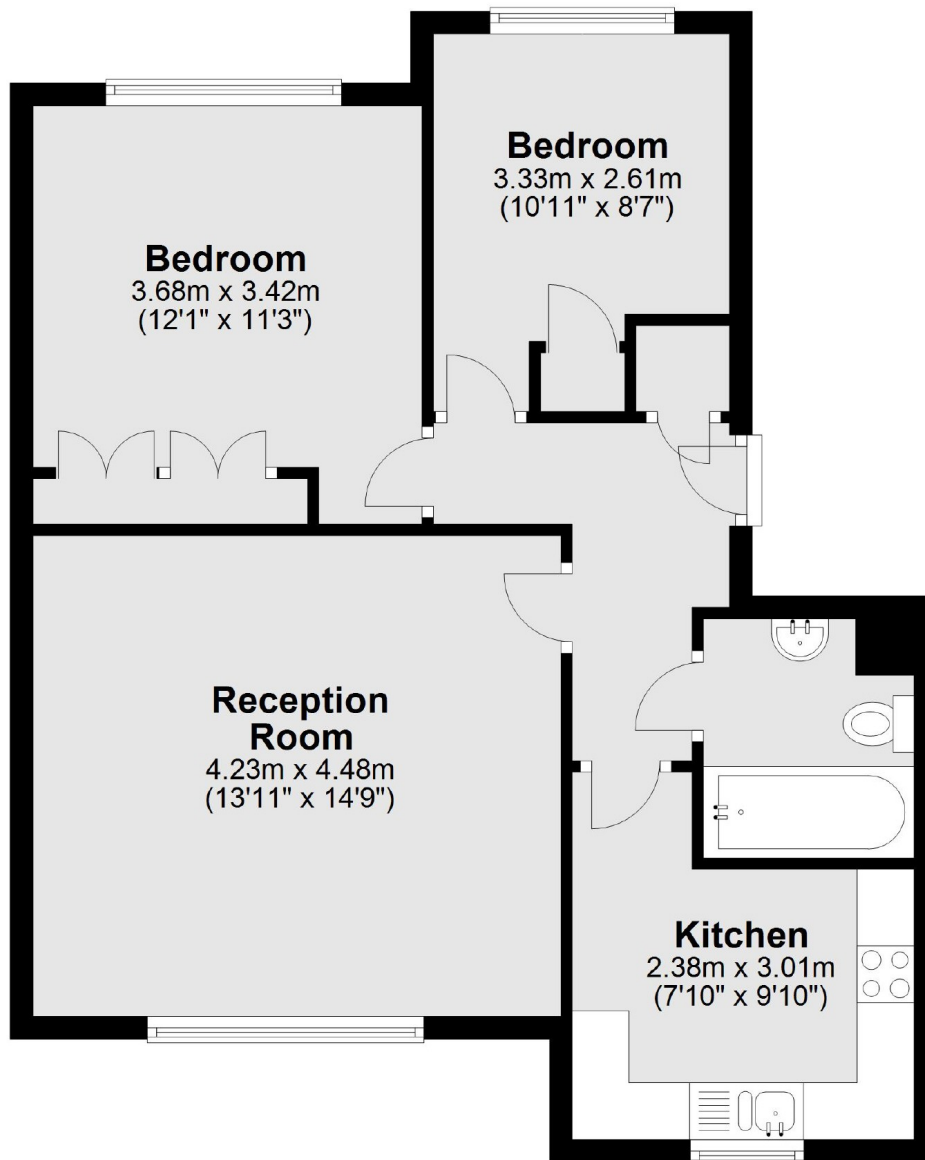
A two double bedroom, ground floor purpose built apartment. There is an off street parking space, the property is presented in beautiful condition, there are communal gardens and no onward chain.

East Road is a quiet street located close to Haydons Road tram link and the northern line. Wimbledon Broadway is also close by, with a fantastic selection of High Street brand shops, popular restaurants and the district line tube.

Features

- Two Bedrooms
- Purpose Built
- Ground Floor
- Off Street Parking
- Communal Gardens
- No Onward Chain

East Road, London, SW19



Total area: approx. 59.7 sq. metres (642.7 sq. feet)