



Meadow Road, SW19

£750,000

Dexters



Meadow Road, SW19

A two double bedroom, mid terrace Victorian house, with a large square bay window. The house has a superb extension to the rear, with a modern kitchen and landscaped, south facing garden, complete with two mature wisterias.

The ground floor has a reception room to the front, complete with a working fireplace, handmade alcove and shelving units, original Victorian floorboards, original cornice and double glazed sash windows.

The rear extension has been constructed to create an expansive, open kitchen/ dining room, complete with a water-fed underfloor heating system. Some of the finest materials have been used during construction, including a travertine stone tiled floor, granite work surfaces, a zoned lighting system and bifolding doors.

The first floor is arranged as two double bedrooms and a family bathroom, still with the ability to extend the property in to the loft, to create a three double bedroom, two bathroom home.

Set on a popular, community-spirited street, minutes from the northern line and a number of outstanding schools. M&S and Merton Abbey Mills are also nearby with a wonderful selection of amenities.

Features

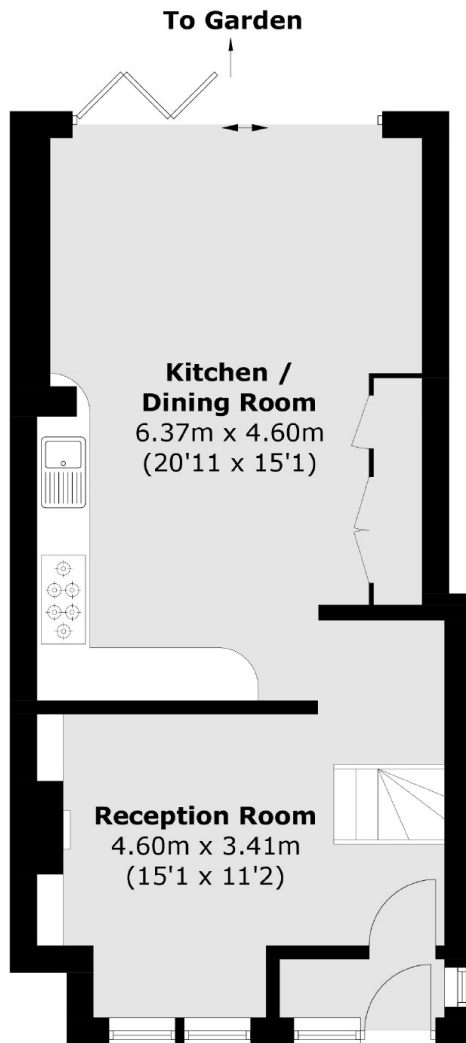
- Loft Extension Potential
- South Facing Garden
- Open Kitchen/ Dining Room
- Victorian Terrace House
- Working Fireplace
- Quiet Tree Lined Road







Meadow Road, London, SW19



Ground Floor



First Floor

Total area (approx.): 76.2 sq. m (820.2 sq. ft)