



## Vale Crescent, SW15

£1,795 Per calendar month

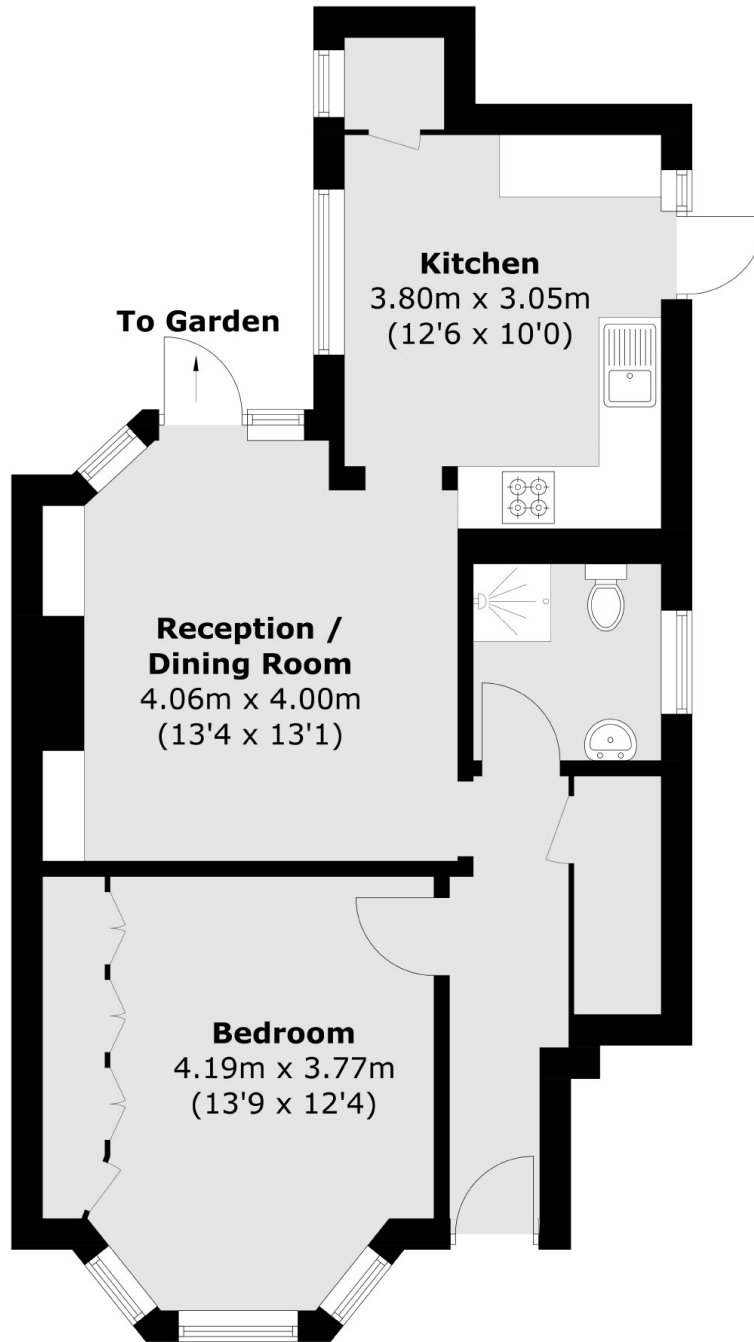
A recently refurbished, one double bedroom, ground floor maisonette with an eat-in kitchen, modern shower room and generous private garden and separate patio space.

Vale Crescent is situated within easy reach of the many amenities of Raynes Park, Kingston-Upon-Thames and Putney with the beautiful green open spaces of both Wimbledon Common and Richmond Park surrounding the property.

### Features

- Ground Floor Maisonette
- One Double Bedroom
- Recently Refurbished
- Large Private Garden
- Shower Room
- Patio Garden

# Vale Crescent, London, SW15



Total area (approx.): 54.3 sq. m (584.5 sq. ft)