



Hartfield Road, SW19

£800,000

**** Stamp Duty Paid **** A two-bedroom two two-bathroom ground floor apartment with two terraces and a Juliette balcony and access to a large communal garden. Each bedroom has an en-suite bathroom, with very high specifications throughout.

Wimbledon is a location where life balance is part of the fabric a bustling town centre, a stylish village, a beautiful common, a generous park with its very own lake and exceptional interconnections.

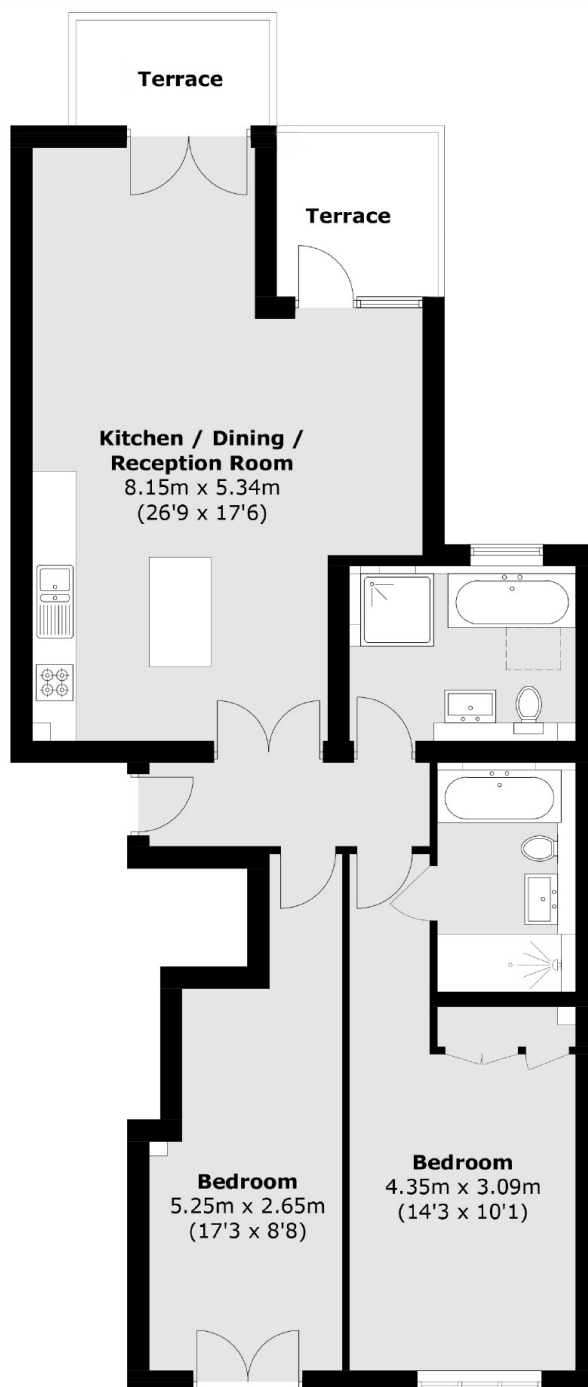
Famous as the home of the annual Wimbledon Championships, the oldest and most prestigious tennis tournament in the world, Wimbledon also offers a European style café society, trendy independent boutiques, lively pubs, relaxing bars and many exhilarating places to eat.

Wimbledon Common presents a delightful backdrop for cycling, walking and running. There are stables for those interested in horse riding and a cricket club providing the unmistakable summer sound of leather on willow. Nestled in the heart of the treasured Wimbledon Common, you'll find long-established clubs such as the Royal Wimbledon Golf Club, which was established in 1865 and Wimbledon RFC, one of the country's oldest rugby clubs.

Features

- Two Double Bedrooms
- Two Bathrooms
- Two Terraces
- Communal Gardens
- 'Outstanding' Local Schools
- Great Transport Links

Hartfield Road, London, SW19



Total area (approx.): 90.5 sq. m (974.1 sq. ft)
Terrace : 7.9 sq. m (85.0 sq. ft)