



Ridgway, SW19

£795,000

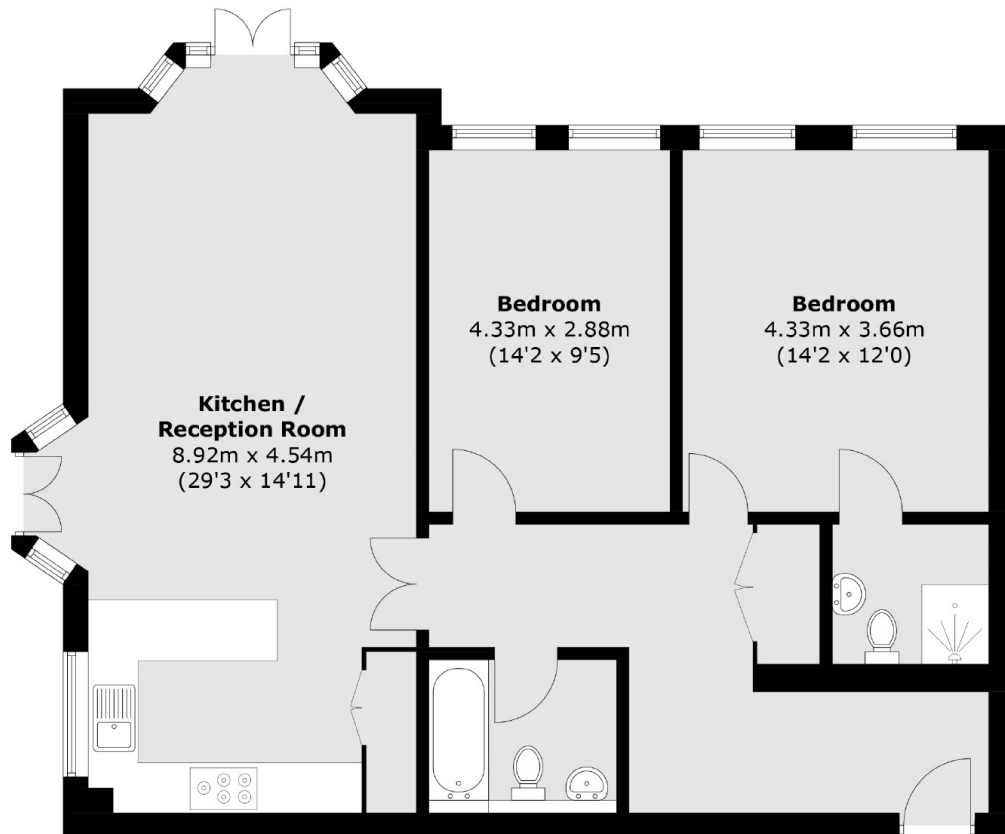
A fully refurbished ground floor apartment set within this highly regarded modern development. Conveniently situated for access to Wimbledon Village and Wimbledon Common. The property benefits from two double bedrooms, two bathrooms, and an allocated parking space.

Chimneys Court is within walking distance of the All England Lawn Tennis Championships, Golf clubs, Equestrian facilities, Kings College and Parkside private hospital and moments away from acres of woodland as well as the Ivy and other local restaurants and amenities.

Features

- Two Double Bedrooms
- Two Bathrooms
- Fully Refurbished
- Share of Freehold
- Allocated Parking
- Communal Gardens

Ridgway, London, SW19



Total area (approx.): 89.5 sq. m (963.4 sq. ft)

Dexters

Wimbledon
12 The Broadway
London
SW19 1RF
Sales
020 8545 8580

Energy Rating: C. We aim to make our particulars both accurate and reliable. However they are not guaranteed; nor do they form part of an offer or contract. If you require clarification on any points then please contact us, especially if you're traveling some distance to view. Please note that appliances and heating systems have not been tested and therefore no warranties can be given as to their good working order.

 **RICS** | Regulated
Estate Agent
and Letting Agent

dexters.co.uk