



Worple Road, SW20

£2,000 Per calendar month

A two bedroom, two bathroom, first floor apartment that has been freshly decorated throughout and offers a large living space and separate kitchen.

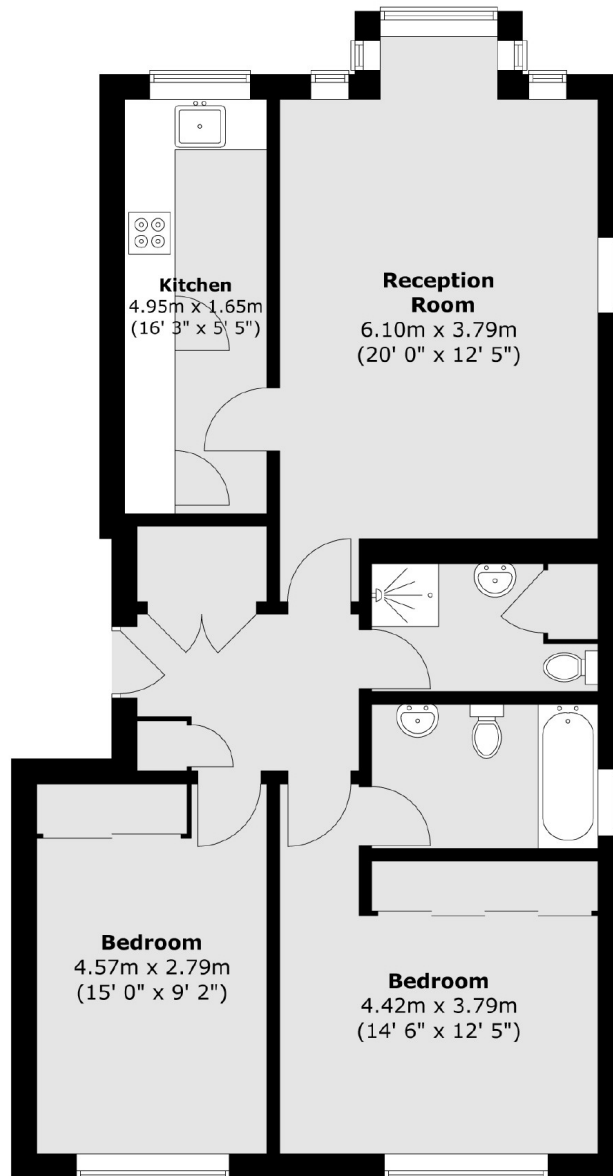
Nasonhall Court offers close proximity to Wimbledon Village and the Common, as well as Wimbledon Centre with the station, a wide range of shopping facilities, restaurants and bars.

Features

- Two Bedrooms
- Two Bathrooms
- First Floor
- Redecorated
- Separate Kitchen
- Plenty of Storage

Worple Road, London, SW20

First Floor



Total area (approx.) : 79.1 sq. m (851 sq. ft)