



## Cowper Road, SW19

£625,000

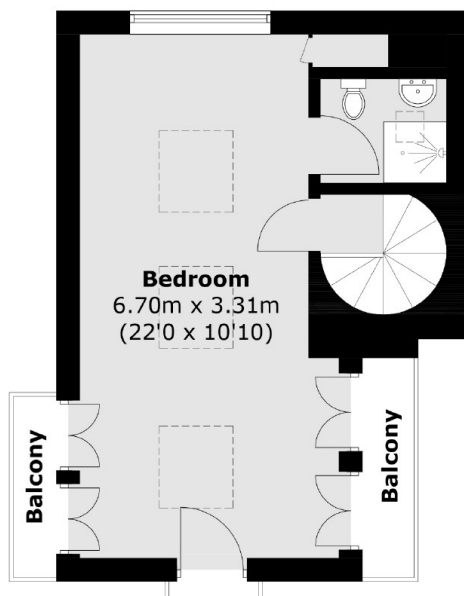
A modern and contemporary freehold house in the much sought after Poets area of Wimbledon. With two double bedrooms, generous open plan living space and a private garden, this property would suit professionals, families and investors alike.

Located within the catchment area for several primary schools and close to Haydons Road Thameslink, Wimbledon mainline and district line and two Northern line stations.

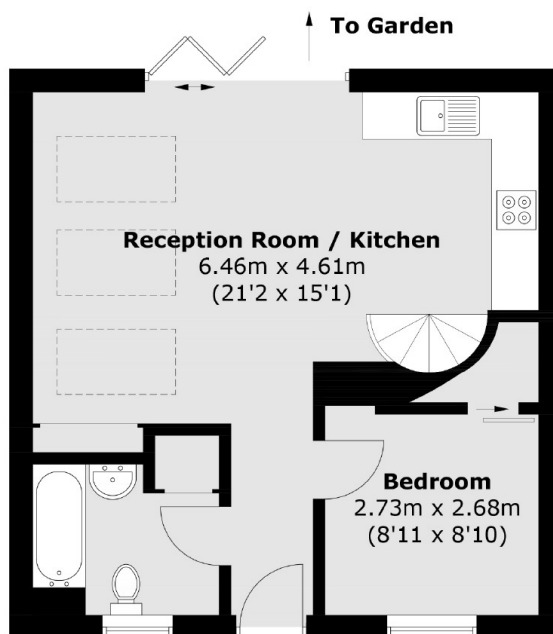
### Features

- Two Double Bedrooms
- Two Bathrooms
- Private Garden
- Double Height Ceiling and Windows
- Off Street Parking
- Freehold

# Cowper Road, London, SW19



## First Floor



## Ground Floor

Total area (approx.): 70.7 sq. m (761.0 sq. ft)  
Balcony : 3.1 sq. m (33.4 sq. ft)